



Adjustable feet to alter height



# Cargo | Supply channel

with integrated expansion joint

- For the distribution of power, IT and water lines
- Designed to withstand a wheel load of 10 tons

Heavy-duty supply channels  
**Cargo**

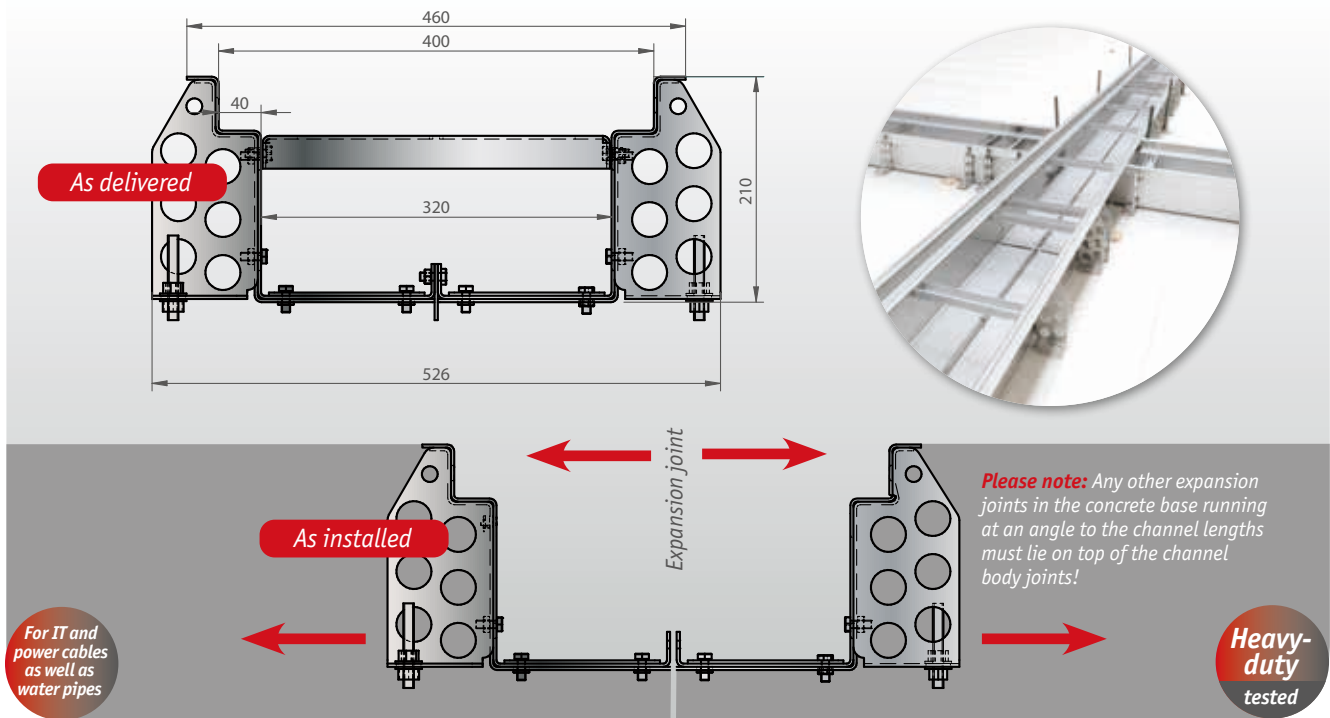


With integrated expansion joint



# Cargo | Supply channel with integrated expansion joint

Custom measurements  
Upon request



## Cargo heavy-duty supply channel | made of hot-dip galvanised steel 3.0 mm

Standard length: 3,000 mm

Item designation	Load class	Visible width	Internal width	Total height	Internal height	For grating width
VRC 400-210 ST	10 t Radlast	460 mm	320 mm	210 mm	157 mm	400 mm

## Cargo heavy-duty supply channel | made of stainless steel (V2A) 3,0 mm

Standard length: 3,000 mm

Item designation	Load class	Visible width	Internal width	Total height	Internal height	For grating width
VRC 400-210 VA	10 t Radlast	460 mm	320 mm	210 mm	157 mm	400 mm

### End piece

Item designation	Material
VRC E 400-210 ST	stainless steel
VRC E 400-210 VA	h-d g steel



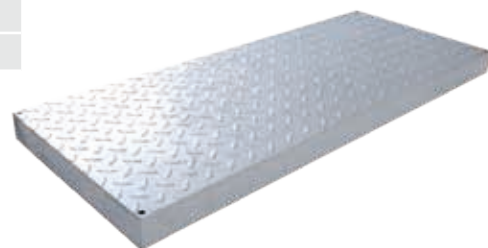
### Height adjustment

Item designation	Material
VRC HV 210-310 ST	stainless steel
VRC HV 210-310 VA	h-d g steel

## Cargo heavy-duty gratings (with checker plate cover) | made of hot-dip galvanised steel

Standard length: 500 mm and 1,000 mm

Item designation	Load class	Total width	Total height	Length
SLR C 400-53 ST (500)	10 t Radlast	400 mm	53 mm	500 mm
SLR C 400-53 ST (1000)	10 t Radlast	400 mm	53 mm	1,000 mm



For IT and power cables as well as water pipes

Heavy-duty tested



**Adjustable feet to alter height**



**Height-adjustable**

The combination of screwed connections on the one side **1** and threaded pins on the other **2** allows for quick, easy and millimetre-precise height adjustment of the channels via the feet.



**With integrated expansion joint**

**Spacers and screws are removed after installation**

**Integrated expansion joints**

The two-section construction of the channel bodies allows for an expansion joint to be incorporated inside the Cargo. The channel segments that are still screwed in along the joint on the image above and the spacers that double up as mounting handles are removed after inserting the concrete base.

# Richard Brink GmbH & Co. KG

## Metalware Production and Sales

### *Germany*

Görlitzer Straße 1  
33758 Schloß Holte-Stukenbrock  
T +49 (0)5207 95 04-0  
F +49 (0)5207 95 04-20

[anfragen@richard-brink.de](mailto:anfragen@richard-brink.de)  
[bestellungen@richard-brink.de](mailto:bestellungen@richard-brink.de)

### *Great Britan*

Causeway House  
13 The Causeway  
Teddington, TW11 0JR T  
+44 (0) 20 3096 7261

[request@richard-brink.com](mailto:request@richard-brink.com)  
[order@richard-brink.com](mailto:order@richard-brink.com)

[www.richard-brink.com](http://www.richard-brink.com)

