



***Mina***  
light-shaft covers

**DRAINAGE AND  
DEWATERING SYSTEMS**

**HEAVY-DUTY  
SYSTEMS**

**ROOF AND WALL  
SYSTEMS**

**PLANTING  
SYSTEMS**

**BATBROUWIND  
KRÜGERSYSTEME**



## Mina light-shaft covers

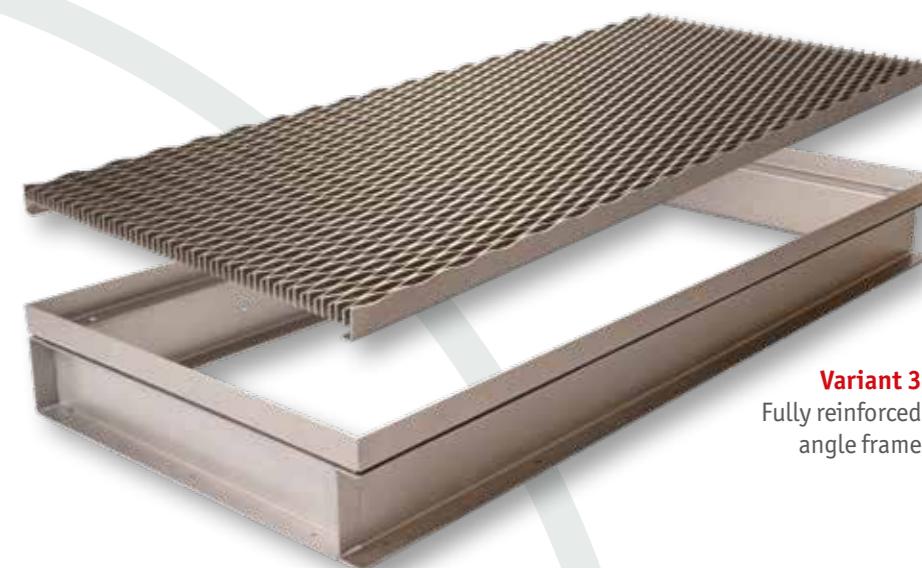
Our **Mina** light-shaft covers lend the perfect finish to cellar shafts – with a precise fit and plenty of aesthetic appeal. A precise fit because our covers are always made to measure in line with your individual specifications; aesthetic appeal because you can choose from our extensive range of gratings: from classic mesh right over to striking design solutions, there really is something for every style.

Variety of designs to meet your specifications and demands



### Gratings and angle frames for any installation location

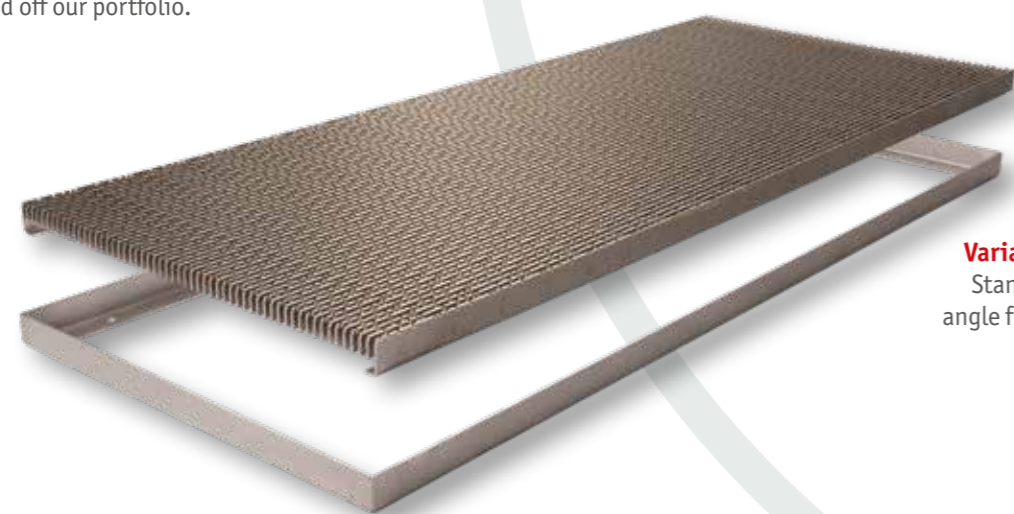
We offer a choice of apt cellar-shaft covers, either as a grating manufactured to fit an existing angle frame, or as a complete package that includes both the grating and the angle frame. We can also reinforce the frames on the wall side or in their entirety during manufacture. Frames are fixed in place by either screwing them down or setting them in concrete.



**Variant 3**  
Fully reinforced  
angle frame



**Variant 2**  
Angle frame  
reinforced on  
the wall side



**Variant 1**  
Standard  
angle frame

**Always  
made to  
measure**

#### Dimensions

Individual custom manufacture on request

#### Material and thickness

Grating: stainless steel or hot-dip galvanised steel  
Frame: stainless steel 3.0mm to 6.0mm,  
depending on load

#### Accessories

Safety chains

#### Materials used

We manufacture our products using exclusively European materials from Germany, Sweden, France and Italy.



#### Your light shafts need to withstand vehicle traffic?

No problem. Depending on their intended use, we produce our covers with the respective load in mind, whether for foot traffic, or car or truck loads. Optional extras, such as the inclusion of safety chains with all grating designs, round off our portfolio.



# Range of gratings – the perfect finish

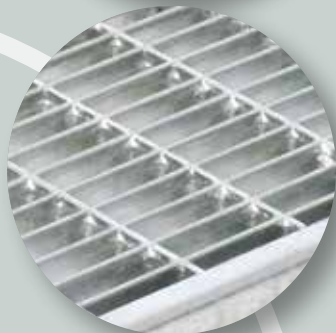


## Gratings for our *Mina* light-shaft covers

We currently offer a selection of nine different gratings made from hot-dip galvanised steel or stainless steel in seven distinct designs, which are always made to measure and designed for various load classes.



**Mesh grating 30x10**  
stainless steel



**Mesh grating 30x10**  
hot-dip galvanised steel



**Longitudinal bar grating 20x3**  
stainless steel



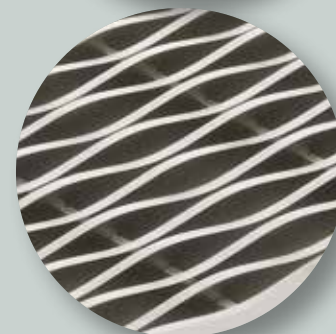
**Longitudinal bar grating 20x3**  
hot-dip galvanised steel



**Longitudinal bar grating 7x7**  
stainless steel



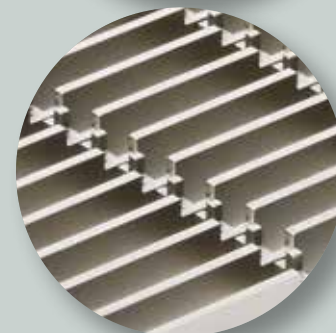
**Hydra Linearis**  
stainless steel



**Legato**  
stainless steel



**Ritmo**  
stainless steel



**Staccato**  
stainless steel



**Our aspiration:  
to simply be better.**

**More than 45 years of metalware production**

Richard Brink is a medium-sized and growing family-run company from Schloss Holte-Stukenbrock. Founded in 1976, the company is now managed by the second generation. With over 150 employees and our own, also internationally oriented sales team based, for instance, in Austria, France and the Netherlands, we have established ourselves in the market as a specialist for premium metal goods.

We develop, produce and sell innovative drainage and dewatering solutions alongside versatile planting systems and products for roofs and walls, industry, bathrooms and kitchens.

In doing so, we place great importance on a level of workmanship and dimensional accuracy that satisfies our customers' own high standards. Not only are we known for our broad range of standard products, we have also made a name for ourselves as a manufacturer of individual, custom-made products and bespoke solutions.



**Richard Brink** GmbH & Co. KG  
Metalware Production and Sales

**Germany**  
Görlitzer Straße 1  
33758 Schloß Holte-Stukenbrock  
T +49 (0)5207 95 04-0  
F +49 (0)5207 95 04-20

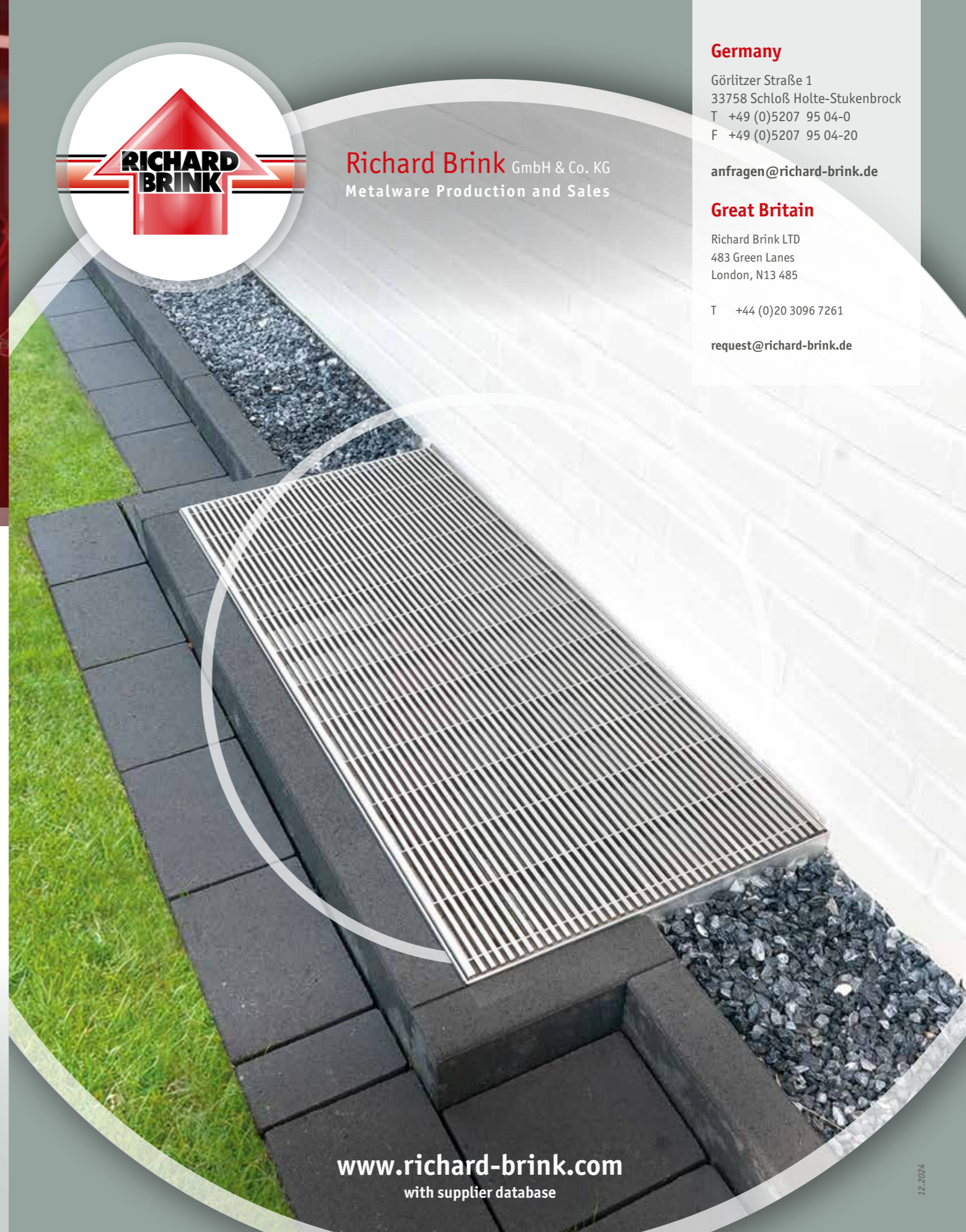
[anfragen@richard-brink.de](mailto:anfragen@richard-brink.de)

**Great Britain**

Richard Brink LTD  
483 Green Lanes  
London, N13 485

T +44 (0)20 3096 7261

[request@richard-brink.de](mailto:request@richard-brink.de)



[www.richard-brink.com](http://www.richard-brink.com)  
with supplier database



**Mina** light-shaft covers

**DRAINAGE AND  
DEWATERING SYSTEMS**

**HEAVY-DUTY  
SYSTEMS**

**ROOF AND WALL  
SYSTEMS**

**PLANTING  
SYSTEMS**

**BATHROOM AND  
KITCHEN SYSTEMS**