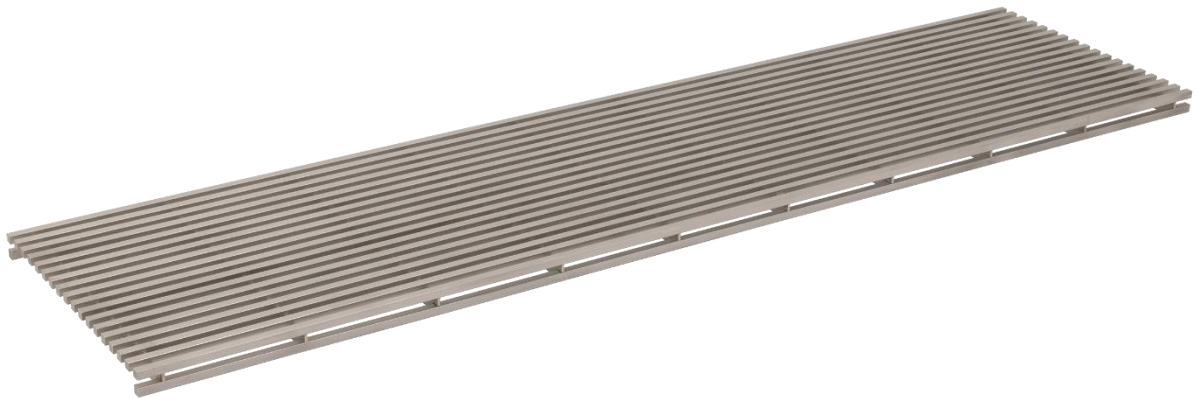




Technical data sheet

Hydra Linearis longitudinal bar grating DRR LH



Manufacturer

Richard Brink GmbH & Co KG
Metal goods manufacture and distribution
Görlitzer Str. 1
33758 Schloß Holte-Stukenbrock
Phone: 0049 (0)5207 9504-0
Fax: 0049 (0)5207 9504-20



Product description

This item is a grating that we recommend for use in bathrooms, as the 7 mm wide bars provide a comfortable footing so that they can be walked on barefoot without hesitation.

Dimensions

Article designation	for inlet width	Height	Mesh size
DRR LH 160-20 7 x 7 VA	160 mm	20 mm	7 x 7 mm
DRR LH 250-20 7 x 7 VA	250 mm	20 mm	7 x 7 mm
DRR LH 500-20 7 x 7 VA	500 mm	20 mm	7 x 7 mm

Standard length: 1,000 mm, grating length up to 1,500 mm possible in one piece. On customer request, all dimensions can be modified and supplied as custom-made products.

Materials used

We only use European materials from Germany, Sweden, France and Italy for our products.

Grating material specification

We use stainless steel V2A (1.4301) for both the mesh gratings and the longitudinal bar gratings, and V4A (1.4401) on customer request.

Load

In accordance with DIN EN 1253-1, a distinction is made between the following load classes:

Load class	Installation areas
K 3	Areas without vehicular traffic, permissible load 300 kg, e.g. in swimming pools, small kitchens with pedestrian traffic only
L 15	Areas with light vehicular traffic, permissible load 1,500 kg, e.g. in kitchens where pallet trucks are used



M 125	Areas with vehicular traffic, permissible load 12,500 kg, e.g. in commercial kitchens with forklift traffic, small delivery vehicles
-------	--

For use in commercial kitchens, load classes L 15 and M 125 are relevant, depending on vehicle use.

Processing and care instructions

Dust particles from other metals or general cutting of components with flying sparks on the product should be avoided. If dust particles or soiling from other metals are present, these must be removed immediately using appropriate cleaning agents.

The grates must not be cleaned with strong acids or alkalis, but by hand with a broom or, if necessary, with a high-pressure cleaner.

Further installation and usage instructions as well as information on the material can be found at: <https://www.richard-brink.de/en/downloads/overview.html>