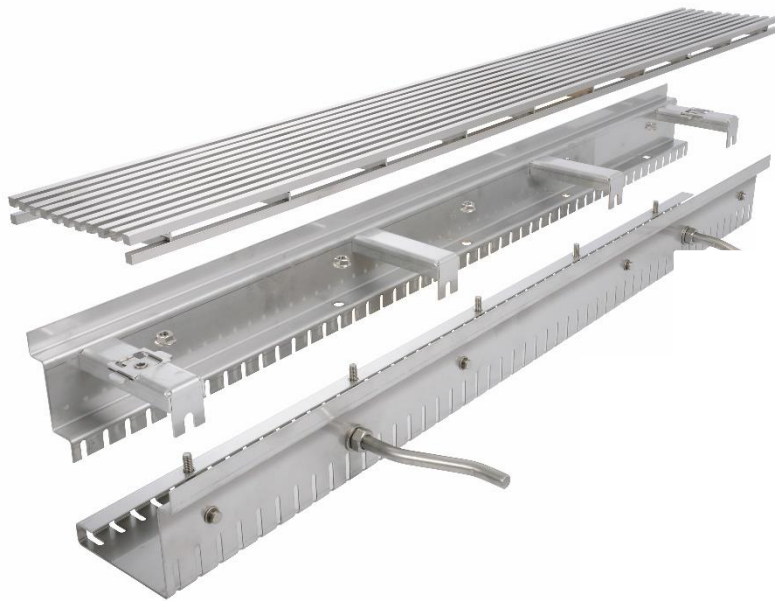




## Technical data sheet

### Channel with removable side panel & water baffle

\*



### Manufacturer

Richard Brink GmbH & Co KG  
Metal goods manufacture and distribution  
Görlitzer Str. 1  
33758 Schloß Holte-Stukenbrock  
Phone: 0049 (0)5207 9504-0  
Fax: 0049 (0)5207 9504-20



## Product description

The channel with removable side section and water guide plate is a box channel either with or without lateral perforation. The cover (grating) is designed either as a mesh grating or longitudinal bar grating. The channel has a removable side section to ensure that even this heavy-duty channel set in concrete can be inspected.

## Dimensions and material specification

- The channel is manufactured flexibly according to customer requirements.
- The standard channel length is 1,000 mm.
- The channel is available in stainless steel (V2A).
- The material thickness is 1.5 mm.

## Materials used

We only use European materials from Germany, Sweden, France and Italy for our drainage channels.

## Important notes

When installed on a sealed concrete slab (*balconies, roof surfaces*), a protective film (*made of suitable material, e.g. EPDM film*) must be installed between the gutter and the waterproofing membrane at least in the width of the gutter in order to protect the waterproofing permanently.

The channel body must rest completely on a concrete foundation. The gutter body (*including the cantilevered grate supports*) must be placed in drainage mortar.

Our installation regulations apply.

## Processing and care instructions

If necessary, the channels must also be laid in accordance with the instructions of the waterproofing manufacturers (*e.g. bitumen manufacturers, film manufacturers, etc.*), and if necessary, precautionary measures, e.g. building protection mats, must be laid.

The channels can be cut to size. However, it is important to ensure that the separating medium (*e.g. saw blade, cutting wheel, etc.*) is absolutely clean or does not contain any components of other metals, otherwise corrosion can occur. All interfaces (hot-dip galvanized steel) must be cold re-galvanized. In general, we recommend custom-made products on site, as they are properly galvanized afterwards.



Dust particles of other metals or general cutting of components with flying sparks on the product should be avoided. If dust particles or dirt from other metals are present, they must be removed immediately with appropriate cleaning agents.

The gutters must not be cleaned with strong acids or bases, but by hand with a broom or, if necessary, with a high-pressure cleaner.

If the gutter is used under canopies or canopies, it should be checked regularly for contamination and flushed as necessary, as only a small amount of water is drained away and more deposits occur.

Further installation and usage instructions as well as information on the material can be found at:

<https://www.richard-brink.de/en/downloads/overview.html>