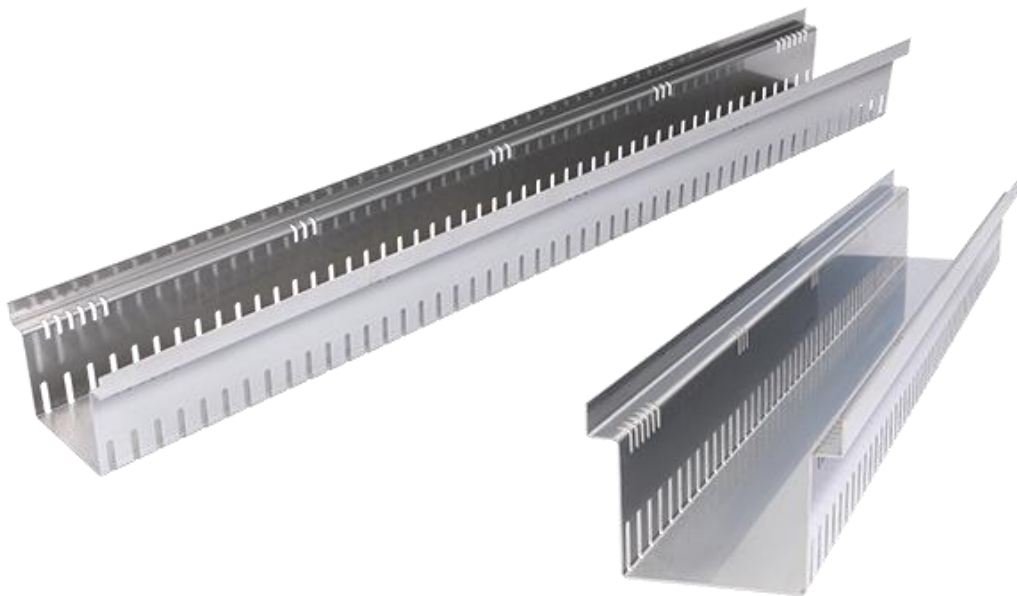




Technical data sheet

Drainage channel Stable



Manufacturer

Richard Brink GmbH & Co KG
Metal goods manufacture and distribution
Görlitzer Str. 1
33758 Schloß Holte-Stukenbrock
Phone: 0049 (0)5207 9504-0
Fax: 0049 (0)5207 9504-20

Status: 09/24



Product description

The Stabile drainage channel with fixed installation height is a box channel with integrated slotted holes (30x5 mm). The cover (*grating*) is designed either as a mesh grating, longitudinal bar grating, cross bar grating, perforated plate or double slotted grating. All gratings from our range can be combined with the channel.

Load class

The channel is designed in accordance with load class A15 (*walkable*).

Dimensions

The gutter is supplied in five standard sizes.

Inlet widths: 100/140/160/200/250 mm

heights: 40/50/60/80/100 mm each

The standard channel length is 1,000 mm. One-piece lengths are available up to 3,000 mm on request.

The channel is available in stainless steel (V2A) and hot-dip galvanised steel. The thickness of both materials is 1.5 mm.

At the customer's request, all dimensions can be modified and supplied as custom-made products.

Outlet cross-section of the channel through lateral perforation and perforations

Inlet width 100 mm: one-sided 72.31 cm²/m, both-sided 144.62 cm²/m

Inlet width 140 mm: one-sided 72.31 cm²/m, both-sided 144.62 cm²/m

Inlet width 160 mm: 72.31 cm²/m on one side, 144.62 cm²/m on both sides

Inlet width 200 mm: 72.31 cm²/m on one side, 144.62 cm²/m on both sides

Inlet width 250 mm: one-sided 72.31 cm²/m, both-sided 144.62 cm²/m



Accessories

- corner formations
- connector
- ends

Important notes

When installing on a sealed concrete slab (*balconies, roof areas*), a protective film (*made of suitable material, e.g. EPDM film*) must be installed between the gutter and the waterproofing membrane at least to the width of the gutter in order to permanently protect the waterproofing.

When installing on a ballast base course, this must be sufficiently compacted to prevent subsequent settlement. The channel must rest on the base course.

Our installation instructions apply.

Materials used

We use only European material from Germany, Sweden, France and Italy for our products.

Material specification channel body and grate

Stainless steel V2A (1.4301) or hot-dip galvanised sheet steel

Material thickness: 1.5 mm

Processing and care instructions

The drainage channels are also to be installed, if necessary, according to the specifications of the waterproofing manufacturers (e.g. *bitumen manufacturers, foil manufacturers, etc.*); if necessary, precautionary measures, e.g. construction protection mats, are to be installed.

The drainage channels can be cut to size. However, it must be ensured that the cutting medium (e.g. *saw blade, cutting disc, etc.*) is absolutely clean or does not contain any components of other metals, as otherwise corrosion may occur. All interfaces (*hot-dip galvanised steel*) must be



cold-galvanised. In general, we recommend custom-made products ex works, as these are properly galvanised afterwards.

Dust particles of other metals or general cutting of components with flying sparks on the product are generally to be avoided. If dust particles or soiling of other metals are present, these must be removed immediately with appropriate cleaning agents.

Cleaning the gutters must not be done with strong acids or bases, but by hand with a broom or, if necessary, with a high-pressure cleaner.

If the gutter is used under canopies or roofing, it should be checked regularly for contamination and flushed as necessary, as only a little water is drained away and more deposits occur.

Further installation & usage instructions as well as information on the material can be found under:

<https://www.richard-brink.de/en/downloads/overview.html>