

Chimney caps and cladding



DRAINAGE AND
DEWATERING SYSTEMS

HEAVY-DUTY
SYSTEMS

**ROOF AND WALL
SYSTEMS**

PLANTING
SYSTEMS

BATHROOM AND
KITCHEN SYSTEMS

Chimney caps with shuttering frames

Made to measure, quickly concreted

Make time-consuming work a thing of the past with our chimney caps and shuttering frames. While casing and stripping tends to involve two trips to the construction site, our system necessitates just one installation appointment.

Installation is complete in just a couple of steps: first, the made-to-measure shuttering frame and the expansion joint plate are placed on the chimney

head. These components prevent concrete from later spilling into the cladding and chimney flue. The shuttering frame is then filled with concrete before the cover is fitted and screwed onto the frame.

Whether for new builds or the complete restoration of dilapidated chimney heads – we offer a convenient solution for every situation. When placing your order, all we need are the exact external

dimensions of the chimney and, where applicable, the external cladding measurements. We automatically calculate the projections for you. We also manufacture additional accessories such as sheet metal rings for brick flues or expansion joint plates for insulated flues in line with individual specifications.



Step 1:
Fitting the shuttering frame

Both the custom-made shuttering frame ① and the expansion joint plate ② are placed on the chimney head. These components prevent concrete from later running into the cladding and chimney flue.

Step 2: Filling the shuttering frame with concrete

In this step, concrete is added to the shuttering frame

Step 3:
Fitting and fixing the cap

The system is finished as soon as the cap ③ is screwed into place, reliably protecting the chimney from precipitation.

Our chimney caps are available in five designs

We strive to satisfy not only the functional but also the aesthetic requirements of our customers. Hence offering our chimney cowl in five different designs. All our models are manufactured to fit the dimensions of your chimney.

On request, we can also produce the cowls in copper or even as hinged variants.

Chimney caps you can rely on

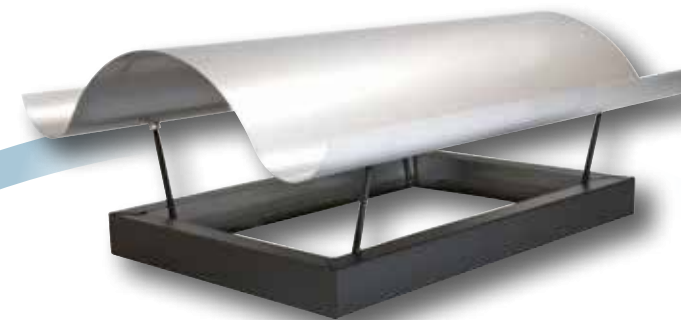
Each of our chimney caps has been awarded a CE marking, which confirms its successful inspection with regard to thermal load, soot fire resistance, pressure stability and wind load.



Tent roof form 2 on RB-SA 1



Waved design on RB-SA 1



Flat design on RB-SA 1



Curved design with flat eaves on RB-SA 1



Tent roof form 1 on RB-SA 1



Take advantage of our online enquiry form and receive your no-obligation quote in just a few clicks!

richard-brink.de/en/chimney-cap-sa1





Chimney caps with Vario fixture

The crown for your chimney

Our chimney caps featuring the Vario fixture add a beautiful finishing touch to existing chimney cover plates. Assembly takes next to no time thanks to a cohesive substructure, with no need for individual supports to be aligned. The chimney cap is optimally fixed to the chimney head thanks to the Vario fastening plates, which can be

used to adjust its alignment. Simply put in position, drill, screw, and you're done!

When placing your order, all we need are the exact external dimensions of the chimney plate. We automatically calculate the projections for you.

The perfect complement: our full chimney head cladding

With our made-to-measure, stainless-steel full cladding, we provide a quick way of covering chimney heads. The product is available either as a standalone unit or in combination with our covers, including Vario fixtures, depending on your needs. We produce full chimney head cladding in accordance with the exact external dimensions of your chimney plate. You can also specify the shape and number of flues.



RB-KVV



RB-SA 2 KVV



Waved design
on RB-SA 2

Five designs tailored to your needs

Our chimney caps with Vario fixtures come with a choice of five different cowl designs. Each model is custom finished to fit your required dimensions.

On request, we can also produce the cowls in copper or even as hinged variants.



Flat design
on RB-SA 2



Curved design
with flat eaves on B-SA 2



Tent roof form 1
on RB-SA 2

Chimney caps you can rely on

Each of our chimney caps has been awarded a CE marking, which confirms its successful inspection with regard to thermal load, soot fire resistance, pressure stability and wind load.



Tent roof form 2
on RB-SA 2



Take advantage of our online enquiry form and receive your no-obligation quote in just a few clicks!

richard-brink.de/en/chimney-cap-sa2

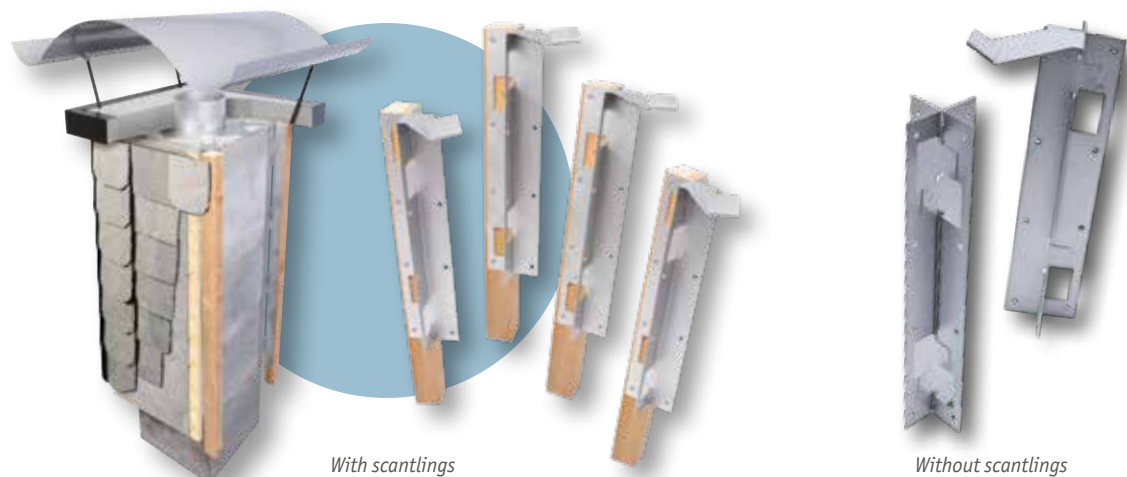


Cladding suspensions for chimney stacks

Quick cladding without drilling or screwing

Forget about drilling, plugging or screwing when it comes to cladding chimneys – our made-to-measure cladding suspensions take a more straightforward approach. We supply the products either with scantlings, which

form part of the delivery and are screwed to the outer metal brackets using stainless-steel screws, or without scantlings as stock items. Head pieces with wall anchors are welded to the top of the metal brackets to enable suspension at the corners of the chimney.



Installation in just a few steps

First, the head pieces with integrated wall anchors are suspended at the corners of the chimney and temporarily strapped in place. After screwing the OSB boards onto the scantlings, sealing materials along with sarking membranes, and finally roof slates can all be fixed in place.

The wall anchors attached to the cladding suspensions are later encased by the concrete used to fill the chimney cap's shuttering frame, ensuring a secure connection with the chimney. The cladding and the chimney cap thus come together to create a single seamless system.



Step 1:

Attaching the cladding suspensions

Here, the head pieces with integrated wall anchors are simply suspended at the corners of the chimney and temporarily strapped in place.

Step 2:

Applying the cladding materials

After screwing any wood-based material to the scantlings, sealing materials, sarking membranes, and finally classic roof slates can all be fixed in place.



YOUR CHIMNEY EXPERTS



Daniel Lienen

T +49 (0)5207 95 04-217
F +49 (0)5207 95 04-20
M daniel.lienen@richard-brink.de



Dennis Siek

T +49 (0)5207 95 04-216
F +49 (0)5207 95 04-20
M dennis.siek@richard-brink.de

Germany

Görlitzer Straße 1
33758 Schloß Holte-Stukenbrock
T +49 (0)5207 95 04-0
F +49 (0)5207 95 04-20

anfragen@richard-brink.de

Great Britain

Richard Brink LTD
483 Green Lanes
London, N13 485
T +44 (0)20 3096 7261

request@richard-brink.com





Richard Brink GmbH & Co. KG
Metalware Production and Sales



www.richard-brink.com
with supplier database

Status 2025

**DRAINAGE AND
DEWATERING SYSTEMS**

**HEAVY-DUTY
SYSTEMS**

**ROOF AND WALL
SYSTEMS**

**PLANTING
SYSTEMS**

**BATHROOM AND
KITCHEN SYSTEMS**