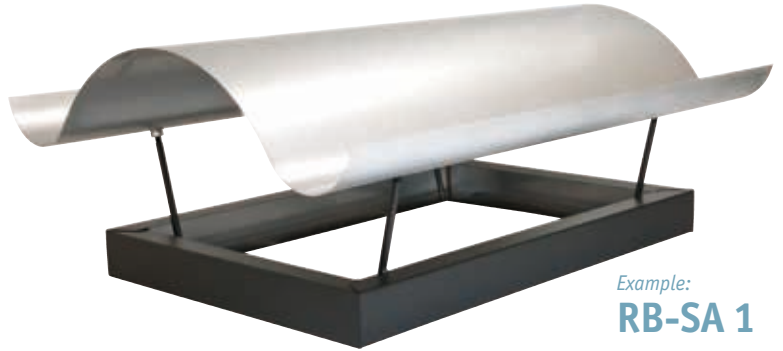




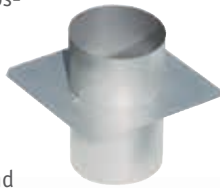
Assembly instructions for chimney caps

First, the shuttering frame is aligned on the chimney. To do so, the lower leg of the frame is extended so that it rests one centimetre above the chimney ①. This prevents the concrete, which is poured in later, from running into the rear ventilation of the cladding. The expansion joint plate serves a similar function. This is inserted in the flue of the chimney and its base plate prevents the concrete from flowing into the flue ②.



Example:
RB-SA 1

The expansion joint plate should be positioned so that the largest possible part of the surface of the chimney remains unobstructed and



can bond with the concrete. Once the concrete poured into the shuttering frame hardens, the chimney cap forms a firm connection with the chimney. ③ This creates a system as if from one mould.

In a final step, the cap is placed on the supports of the shuttering frame and screwed tight with nuts. ④

Please get in touch if you have any queries:
+49 (0)52 07 95 04-0



Installation video available online!

Richard Brink @ YouTube

