

Image captions

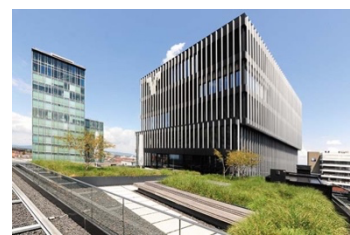



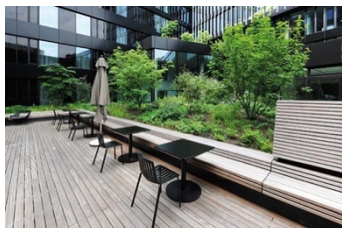
Image	File name	Caption
	<p>RichardBrink_VolksbankFreiburg_01.jpg</p>	<p>The new Volksbank Freiburg building complex impresses with its creative overall concept and its utilisation as a multifunctional area.</p> <p>Photo: Richard Brink GmbH & Co. KG</p>
	<p>RichardBrink_VolksbankFreiburg_02.jpg</p>	<p>The striking façade features floor-to-ceiling windows set behind a curtain-wall lamellar structure, which appears to hover in front of the building's outer shell.</p> <p>Photo: Richard Brink GmbH & Co. KG</p>
	<p>RichardBrink_VolksbankFreiburg_03.jpg</p>	<p>A number of cubic building elements create different levels that encompass a planted inner courtyard.</p> <p>Photo: Richard Brink GmbH & Co. KG</p>
	<p>RichardBrink_VolksbankFreiburg_04.jpg</p>	<p>Raised beds from the company Richard Brink act as dividers in the courtyard, which is used by both Volksbank Freiburg and an adjoining hotel.</p> <p>Photo: Richard Brink GmbH & Co. KG</p>

Image captions



RichardBrink_Volksba
nkFreiburg_05.jpg

Integrated wooden seating provides space to relax or work outside. Optically, the benches flow right down into the terrace flooring.

Photo: Richard Brink GmbH & Co. KG



RichardBrink_Volksba
nkFreiburg_06.jpg

Two additional, separately accessible terraces were also fitted with aluminium planting systems made by the metal products manufacturer.

Photo: Richard Brink GmbH & Co. KG



RichardBrink_Volksba
nkFreiburg_07.jpg

The raised beds divide the outside area here, too, creating enclosed green spaces with their height and use of planting.

Photo: Richard Brink GmbH & Co. KG

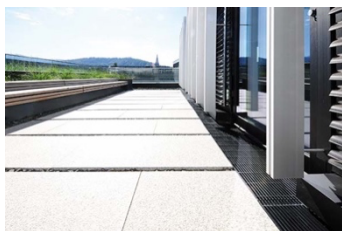


RichardBrink_Volksba
nkFreiburg_08.jpg

The transition between plant beds and seating areas is practically seamless – a clever combination of outdoor furniture and greenery.

Photo: Richard Brink GmbH & Co. KG

Image captions



RichardBrink_Volksba
nkFreiburg_09.jpg

The broad range of products offered by the company Richard Brink is beautifully showcased here. Besides raised beds, the façade area also features drainage channels from the metal products manufacturer.

Photo: Richard Brink GmbH & Co. KG



RichardBrink_Volksba
nkFreiburg_10.jpg

The Stable models reliably collect rainwater and direct it away from the building. Both the channels and the 20 x 3mm longitudinal bar gratings were finished in a graphite black plastic coating.

Photo: Richard Brink GmbH & Co. KG



RichardBrink_Volksba
nkFreiburg_11.jpg

As a low-maintenance and robust type of planting, grasses dominate the planting systems on the elevated terraces.

Photo: Richard Brink GmbH & Co. KG

Image captions



RichardBrink_Volksba
nkFreiburg_12.jpg

The company Richard Brink supplied a total of 882m of its substrate rails for the roof beds, which elegantly frame the sedum mat.

Photo: Richard Brink GmbH & Co. KG



RichardBrink_Volksba
nkFreiburg_13.jpg

The substrate rails reliably separate the planted areas from the adjacent gravel fill. They also enable the flow of any rainfall.

Photo: Richard Brink GmbH & Co. KG



RichardBrink_Volksba
nkFreiburg_14.jpg

The substrate rails can further be used to create divisions between different roof spaces featuring gravel beds.

Photo: Richard Brink GmbH & Co. KG



RichardBrink_Volksba
nkFreiburg_15.jpg

In some places on the site, drainage gullies provide selective support for the drainage system.

Photo: Richard Brink GmbH & Co. KG

Image captions



RichardBrink_Volksba
nkFreiburg_16.jpg

This project underlines the depth and diversity of Richard Brink's product range. From the planting systems to the drainage solutions, everything was supplied from a single source.

Photo: Richard Brink GmbH & Co.
KG