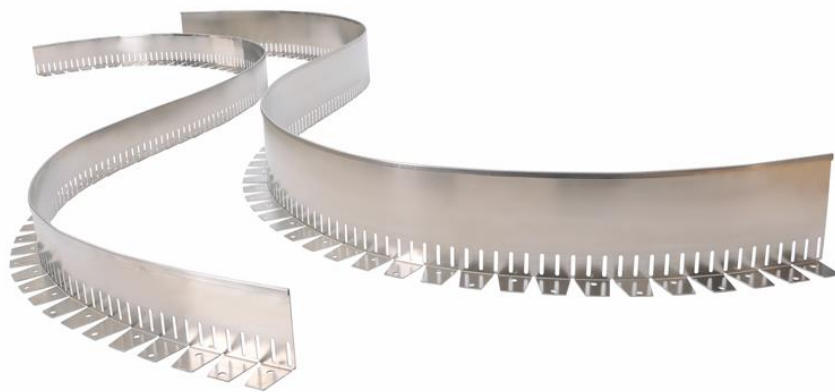




Technical data sheet

Substrate rails BE SUS



Manufacturer

Richard Brink GmbH & Co KG
Metal goods manufacture and distribution
Görlitzer Str. 1
33758 Schloß Holte-Stukenbrock
Phone: 0049 (0)5207 9504-0
Fax: 0049 (0)5207 9504-20

Status: 08/24



Product description

The article Substrate rail BE SUS is an edged sheet metal part to separate different areas cleanly from other surfaces. The BE SUS substrate rails are specially designed for the design of green roofs or other sealed areas. There is no mixing of substrates or fill. The drainage of surface water is optimally ensured by the perforations. Water does not escape from the surface during heavy rainfall events. The water flows through the drainage openings onto the drainage layer on the sealed surface and is drained away. Waterlogging is thus effectively prevented. This is particularly advantageous on green roof surfaces, where excess water cannot drain into the subsoil. In addition, back edgings enable a simple extension by means of connecting plates. These are simply inserted into the rails and fastened with screws. They ensure a seamless transition. Backsplashes and connector plates give the systems additional stability.

The substrate rails are available in straight and flexible form (*for freely formable curve radii*).

Connectors allow edgings to be extended as required and fixed in the ground using ground pins.

Dimensions

Height:	100/150 mm
Support leg:	50 mm
Flanging:	10 mm

At the customer's request, all dimensions can be modified and supplied as custom-made products.

Material specifications

Material: aluminium with recycled content of at least 55% (*AlMg3*), stainless steel V2A (*1.4301*), corten steel

Material thicknesses (*mm*): 1.5 mm each

Other material thicknesses are possible on request.

Accessories

- connector
- earth pins



Processing and care instructions

If the substrate rails are installed on flat roofs, the specifications of the waterproofing manufacturers (e.g. *bitumen manufacturers, foil manufacturers, etc.*) must be observed.

The substrate rails can be cut to size, but care must be taken that the cutting medium (e.g. *saw blade, cutting disc, etc.*) is absolutely clean or does not contain any components of other metals, otherwise corrosion may occur. For example, only new cutting discs should be used for stainless steel substrate rails.

Dust particles of other metals or general cutting of components with flying sparks on the product are generally to be avoided. If dust particles or soiling of other metals are present, these must be removed immediately with appropriate cleaning agents.

Do not clean the substrate rails with strong acids or bases.

The application of de-icing salts (*road salts*) or other salts is to be avoided if possible. Elements that come into contact with de-icing salts or salts of any kind must be cleaned regularly.

Further installation & usage instructions as well as information on the material can be found under:

<https://www.richard-brink.de/en/downloads/overview.html>