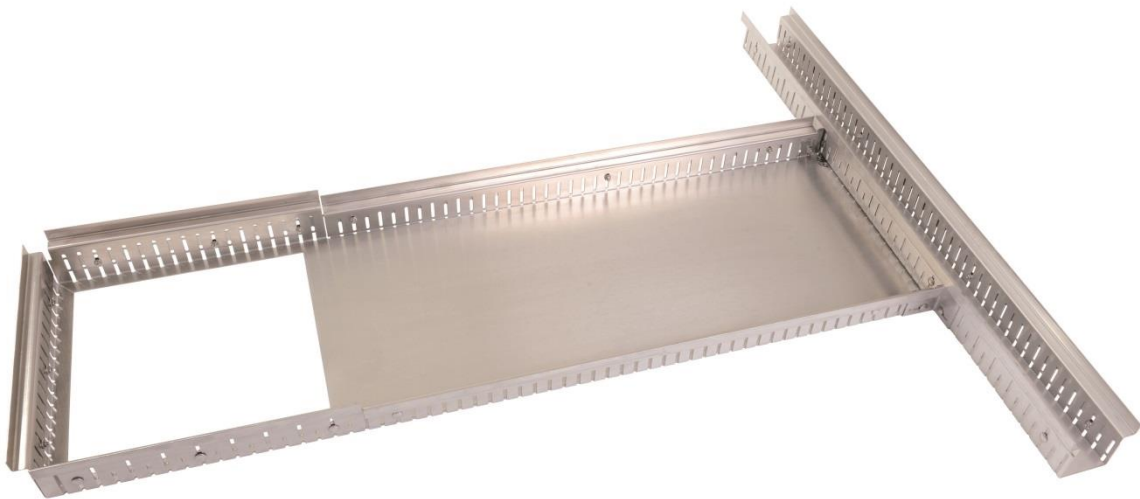




Technical data sheet

Inspection duct Hydra



Manufacturer

Richard Brink GmbH & Co KG
Metal goods manufacture and distribution
Görlitzer Str. 1
33758 Schloß Holte-Stukenbrock
Phone: 0049 (0)5207 9504-0
Fax: 0049 (0)5207 9504-20

Status: 02/22



Product description

The Hydra inspection channel provides a functional connection between drainage channel and gully. It is intended for installation on the height-adjustable drainage systems Hydra and Hydra Express as well as on the fixed drainage systems Cubo and Stabile. For this purpose, the inspection channel is mounted at any point on the drainage channel using a screw connection.

The inspection duct is designed to be height-adjustable to enable a uniform floor level to be maintained for cover materials of different heights.

This system is made to measure for all common panel materials and can be sealed with the floor coverings used. The inspection channel is no longer visible after the floor tiles have been laid. Revision is quickly and easily possible by removing the tiles.

Load class

The channel is designed according to load class A15 (*walkable*)

Dimensions

The inspection duct is supplied in the following standard dimensions:

Inlet widths: 403 mm (*for 400 x 400 mm panel material*)

Custom dimensions possible

Height adjustment respectively: 54-69 / 70-100 / 100-160 mm

Standard length: 1200 mm

Custom dimensions possible

For 30 mm thick panels the dimensions increase by 10 mm, for 40 mm thick panels by 20 mm.

The inspection duct is available in stainless steel (V2A) and hot-dip galvanised steel.

The material thickness for both materials is 1.5 mm.

At the customer's request, all dimensions can be modified and supplied as custom-made products.



Accessories

- Revision duct extension (*standard length 1000 mm*)
- Connector pairs

Important notes

When installing on a sealed concrete slab (*balconies, roof areas*), a protective film (*made of suitable material, e.g. EPDM film*) must be installed between the gutter and the waterproofing membrane at least to the width of the gutter in order to permanently protect the waterproofing.

When installing on a ballast base course, this must be sufficiently compacted to prevent subsequent settlement. The channel must rest on the base course.

Our installation instructions apply.

Materials used

We use only European material from Germany, Sweden, France and Italy for our revision channels.

Material specification

Stainless steel V2A (1.4301) or hot-dip galvanised sheet steel

Material thickness: 1.5 mm



Processing and care instructions

If necessary, the inspection channel must also be laid in accordance with the specifications of the waterproofing manufacturer (e.g. *bitumen manufacturer, foil manufacturer, etc.*); if necessary, precautionary measures, e.g. construction protection mats, must be laid.

The inspection duct can be cut to size. However, it must be ensured that the cutting medium (e.g. *saw blade, cutting disc, etc.*) is absolutely clean or does not contain any components of other metals, otherwise corrosion may occur. All interfaces (*hot-dip galvanised steel*) must be cold re-galvanised. In general, we recommend custom-made products ex works, as these are properly galvanised afterwards.

Dust particles of other metals or general cutting of components with flying sparks on the product are generally to be avoided. If dust particles or soiling of other metals are present, these must be removed immediately with appropriate cleaning agents.

The inspection duct must not be cleaned with strong acids or bases, but by hand with a broom or, if necessary, with a high-pressure cleaner.

Further installation & usage instructions as well as information on the material can be found under:

<https://www.richard-brink.de/downloads/gesamtuebersicht.html>