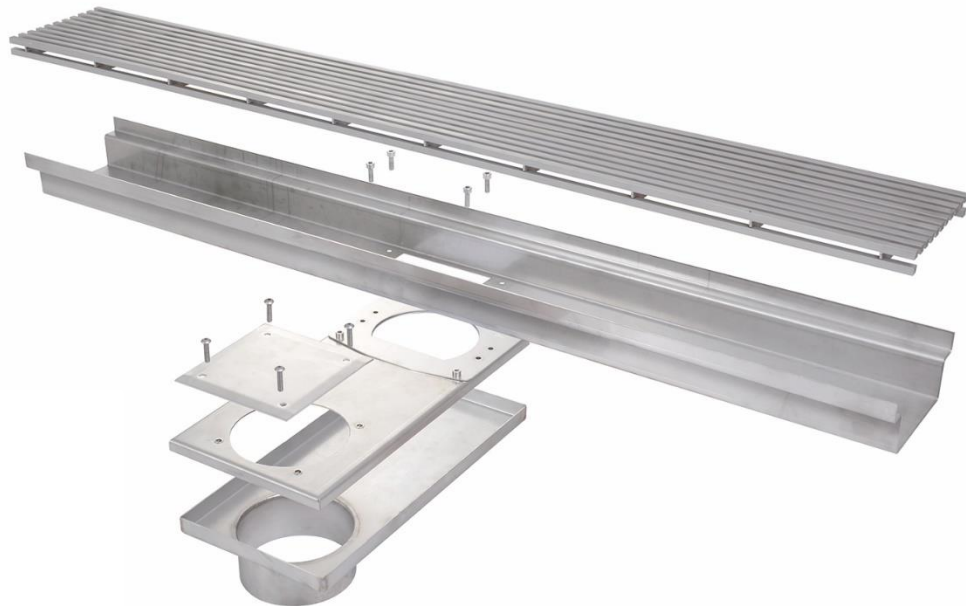




## Technical data sheet

### Soffit drain



### Manufacturer

Richard Brink GmbH & Co KG  
Metal goods manufacture and distribution  
Görlitzer Str. 1  
33758 Schloß Holte-Stukenbrock  
Phone: 0049 (0)5207 9504-0  
Fax: 0049 (0)5207 9504-20

Status: 02/22



## **Product description**

The product "soffit drain" is used when a direct gutter connection in the area of a soffit (inward projection of the outer wall, usually in the area of the window) is not possible via a connection piece below the gutter. The soffit drain ensures a revisable pipe connection, which can bridge the area of a floor slab due to its design. Position and hole diameter are manufactured according to agreement.

## **Dimensions**

Length: 350 mm

Width: 170 mm

Height: 70 mm

DN: 100

At the customer's request, all dimensions can be modified and supplied as custom-made products.

## **Materials used**

We only use European material from Germany, Sweden, France and Italy.

## **Material specification reveal drain**

Stainless steel V2A (1.4301)

Material thickness grate: 1.5 mm

## **Processing and care instructions**

The reveal drain can be cut to size. However, it must be ensured that the cutting medium (e.g. *saw blade, cutting disc, etc.*) is absolutely clean or has no components of other metals, otherwise corrosion may occur. All interfaces (*hot-dip galvanised steel*) must be cold re-galvanised. In general, we recommend custom-made products ex works, as these are properly galvanised afterwards.



Dust particles of other metals or general cutting of components with flying sparks on the product are generally to be avoided. If dust particles or soiling of other metals are present, these must be removed immediately with appropriate cleaning agents.

The soffit drain must not be cleaned with strong acids or bases, but by hand with a broom or, if necessary, with a high-pressure cleaner.

Further installation & usage instructions as well as information on the material can be found under:

<https://www.richard-brink.de/downloads/gesamtuebersicht.html>