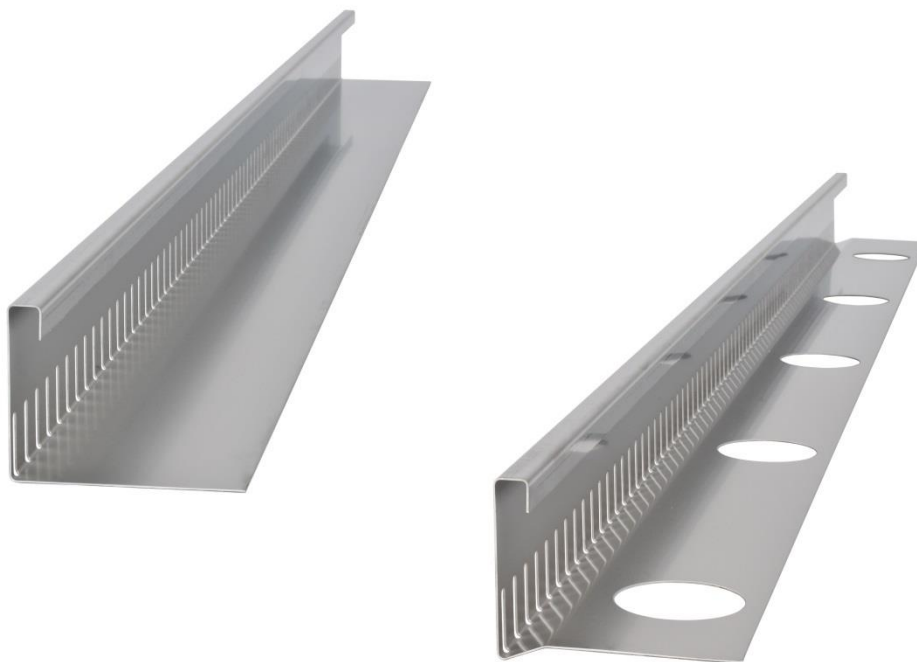




Technical data sheet

KFL Fixed gravel stop Silex



Manufacturer

Richard Brink GmbH & Co KG
Metal goods manufacture and distribution
Görlitzer Str. 1
33758 Schloß Holte-Stukenbrock
Phone: 0049 (0)5207 9504-0
Fax: 0049 (0)5207 9504-20

Status: 08/24



Product description

The article KFL (*gravel stop bar*) is an edging with integrated slotted holes (30x5 mm), which is manufactured in standard dimensions and also individually according to customer requirements. All leg lengths and angles can be freely selected. In general, a sectional drawing (*sketch*) must always be submitted to clarify feasibility.

The inlet cross-section is 72.32 cm²/m (*slotted hole 30x5 mm / punched out every 20 mm*).

Larger inlet cross-sections by arrangement.

The gravel guard is manufactured in two variants:

- without drip edge
- with drip edge

For both variants, round punched holes (Ø 60 mm, *distance between the punched holes approx. 450 mm*) are possible in the support surfaces for welding with bitumen sheeting.

Standard dimensions

The upper back edge is 2 x 15 mm (*vertical and horizontal leg*).

The width of the support legs is variable.

Height: _____ Support leg:

60 mm 100 mm

80 mm 105 mm

100 mm 120 mm

The standard length is 3,000 mm

Material specifications

Material: aluminium with recycled content of at least 55% (*AlMg3*), stainless steel V2A (*1.4301*), copper

Other materials possible on request



Material thicknesses

Alu: 1.5 mm (1.0 mm, 2.0 mm or 3.0 mm on request)

Stainless steel: 1.0 mm (1.5 mm, 2.0 mm, 3.0 mm on request)

Copper: 1.0 mm

Accessories

Connector

Processing and care instructions

If necessary, the gravel trap strips are to be laid according to the specifications of the waterproofing manufacturer (*e.g. bitumen manufacturer, foil manufacturer, etc.*); if necessary, precautionary measures, *e.g.* construction protection mats, are to be laid. The gravel trap strips can be cut to size, but care must be taken that the cutting medium (*e.g. saw blade, cutting disc, etc.*) is absolutely clean or does not contain any components of other metals, otherwise corrosion may occur. For example, only new cutting discs should be used for stainless steel gravel trap bars.

Dust particles of other metals or general cutting of components with flying sparks on the product are generally to be avoided. If dust particles or soiling of other metals are present, these must be removed immediately with appropriate cleaning agents.

When installing on waterproofing surfaces, protective measures in accordance with the regulations must be taken.

Our installation instructions apply.

Further installation & usage instructions as well as information on the material can be found under:

<https://www.richard-brink.de/en/downloads/overview.html>