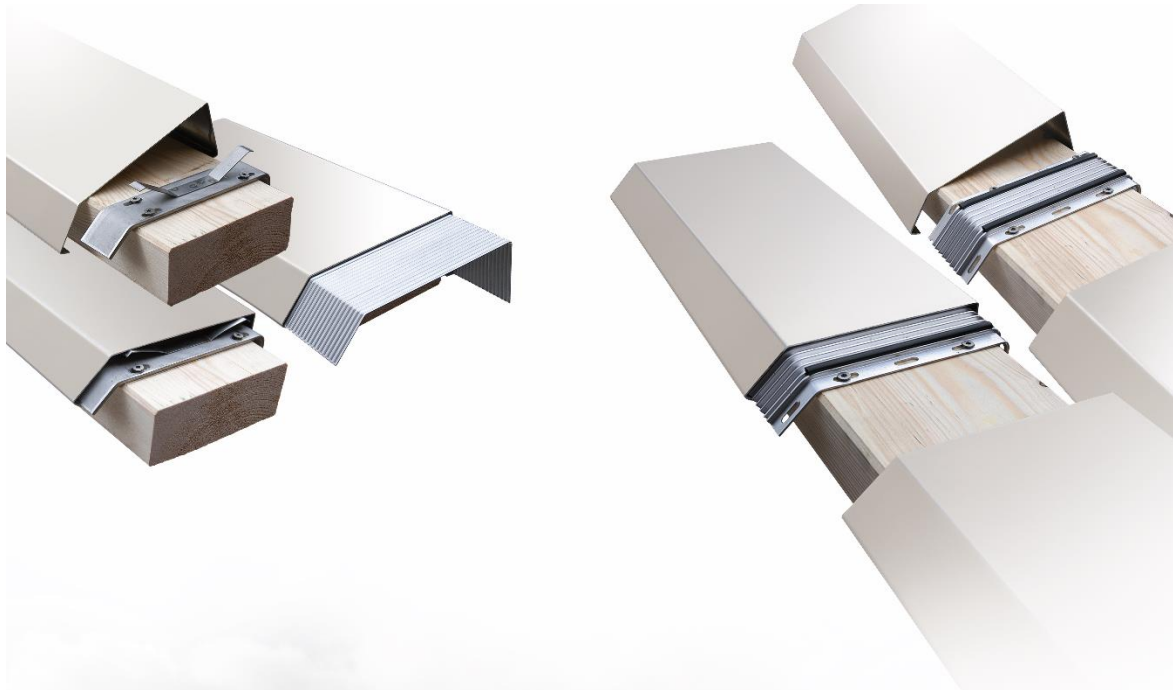




Technical data sheet

Edge profiles



Manufacturer

Richard Brink GmbH & Co KG
Metal goods manufacture and distribution
Görlitzer Str. 1
33758 Schloß Holte-Stukenbrock
Phone: 0049 (0)5207 9504-0
Fax: 0049 (0)5207 9504-20

Status: 02/22



Product description

The edge profiles are wall and parapet copings made of aluminium, copper, titanium-zinc, stainless steel or hot-dip galvanised steel. The edge profiles are manufactured individually according to customer requirements. All leg lengths and angles can be freely selected. In general, a sectional drawing (*sketch*) must always be submitted to clarify feasibility. The profiles can be coloured (*RAL colours*) by means of powder coating.

Two variants of brackets and connectors are available for mounting the edge profiles. The required fasteners (*screws, dowels*) are not included in the scope of delivery.

Holder and connector

Two possible variants are available for the support and the connection of the individual edge profiles.

1. variant: stainless steel spring holder and checker plate connectors (aluminium)



In special applications, the stainless steel spring holders (*V2A*) can be installed with chequer plates (*aluminium*). The spring holders are designed to hold the edge profiles and are installed at regular intervals. The checker plate connectors (*aluminium*) form the watertight connection between the individual profiles.



2nd variant: Rubber lip holder



The rubber lip holders are preferably used for indirect fastening of the edge profiles. The item can be used as a connector for the joints and as a holder. The rubber lips ensure that no water can penetrate into the masonry or concrete between the edge profiles. In addition, the seals ensure a secure connection. The rubber lip holders are made of aluminium.

The brackets and connectors are manufactured to fit the edging profiles ordered by the customer and are ready for assembly.

The holders are to be placed at a minimum distance of 1.00 m and ordered in the appropriate number.

Edge profiles

The edge profiles are available in the following material thicknesses:

Material	Material thickness			
Aluminium	1,00	1,50	2,00	3,00 mm
Copper	0,70	1,00		mm
Titanium-Zinc	0,70	1,00		mm
Stainless steel	1,00	1,50	2,00	mm
Hot dip galvanised steel	1,00	1,50		mm



Special thicknesses are available on request.

The lengths of the edge profiles can be determined by the customer (*up to 3,000 mm*).

Copper edge profiles with 1.0 mm sheet thickness are only available in 2,000 mm lengths, profiles made of copper and titanium-zinc with 0.7 mm sheet thickness are available in 2,000 and 3,000 mm.

In addition, standard lengths of 1,500 and 3,000 m are available.

Profiles

The following profile types are available. The dimensions are determined by the customer.



RB-KP 1.1



RB-KP 3.1



RB-KP 1.2



RB-KP 3.2



RB-KP 2.1



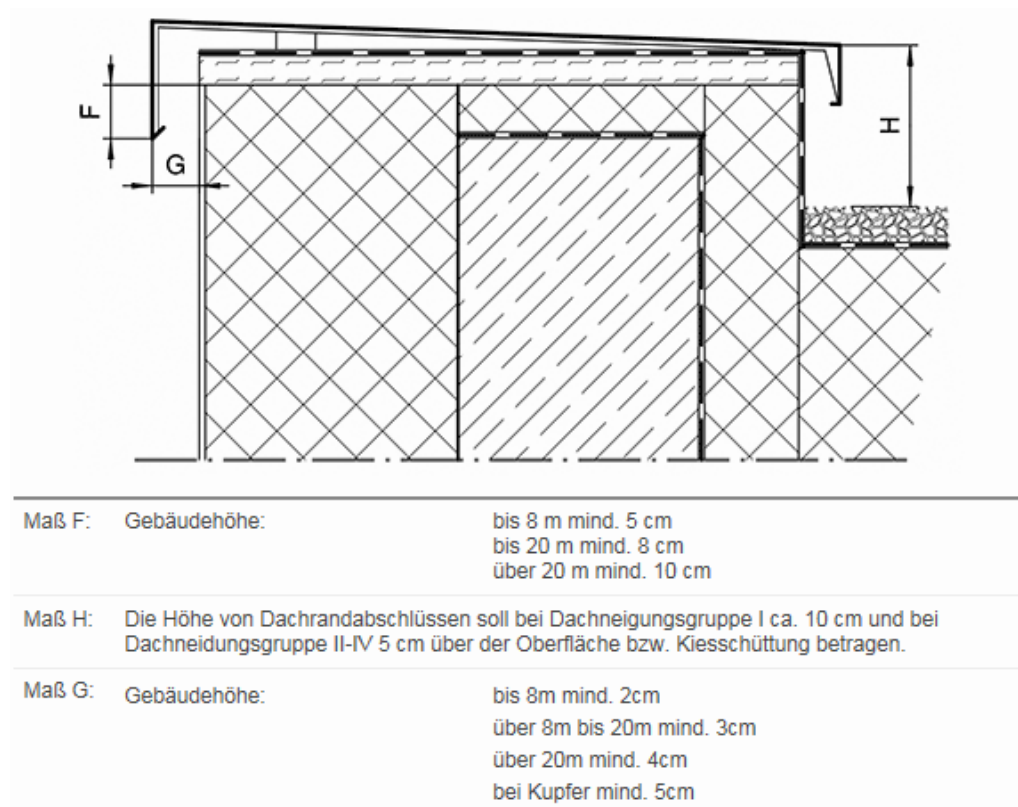
RB-FB 1



RB-KP 2.2



The dimensions shown in the following illustration apply to the overhangs:



The dimensions must be observed when ordering the edge profiles.

Some examples of possible custom-made products are shown below. The profiles and the exact dimensions and unwindings are chosen by the customer according to the type of application.

Example with one bend





Example with two bends



Example with three bends



Corners

The corners are created with a side length of 500 or 750 mm as standard, but the length is always at least 250 mm greater than the crown width. The crown width must be specified when ordering.





Processing and care instructions

In principle, care should be taken when storing and processing the edge profiles in all materials.

Dust particles of other metals or general cutting of components with flying sparks onto the product should generally be avoided, as the surfaces of all materials are very sensitive. If dust particles or soiling of other metals are present, these must be removed immediately with appropriate cleaning agents.

In order to permanently maintain the outer appearance of the edging profiles, regular cleaning work is generally recommended. For this purpose, the profiles should be cleaned by hand with suitable, non-abrasive cleaning agents.

A coating can be damaged by direct contact with spray and/or salt water.

Further installation & usage instructions as well as information on the material can be found under:

<https://www.richard-brink.de/downloads/gesamtuebersicht.html>