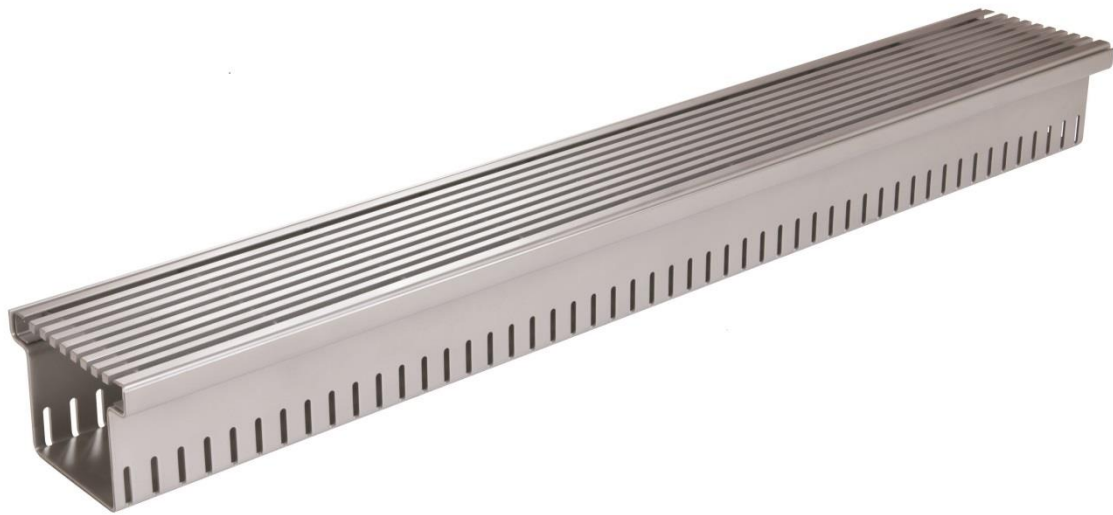




## Technical data sheet

# Drainage heavy-duty channel Stable Magna



### Manufacturer

Richard Brink GmbH & Co KG  
Metal goods manufacture and distribution  
Görlitzer Str. 1  
33758 Schloß Holte-Stukenbrock  
Phone: 0049 (0)5207 9504-0  
Fax: 0049 (0)5207 9504-20

Status: 02/22



## **Product description**

The Stabile Magna heavy-duty drainage channel with fixed height is a box channel with integrated slotted holes (30x5 mm) for heavy-duty applications. The cover (*grating*) is designed either as a mesh grating or longitudinal bar grating.

Special gratings are available for heavy-duty applications.

The channel is designed in accordance with load class C 250 or D 400.

## **Dimensions**

The gutter is manufactured flexibly according to customer requirements.

The standard channel length is 1,000 mm. One-piece lengths are possible up to 1,500 mm with material thickness 3.0 mm on request.

The channel is available in stainless steel (V2A) and hot-dip galvanised steel.

The material thickness is 3.0 or 4.0 mm.

## **Accessories**

- Corner formations
- Connector
- End pieces

## **Materials used**

We use only European material from Germany, Sweden, France and Italy for our products.

## **Material specification channel body and grate**



Stainless steel V2A (1.4301) or hot-dip galvanised sheet steel

Material thickness: 3.0 or 4.0 mm

### **Load class**

Sheet thickness 3.0 mm: following class C 250

Sheet thickness 4.0 mm: following class D 400

### **Important notes**

When installing on a sealed concrete slab (*balconies, roof areas*), a protective film (*made of suitable material, e.g. EPDM film*) must be installed between the gutter and the waterproofing membrane at least to the width of the gutter in order to permanently protect the waterproofing.

The channel body must rest completely on a concrete foundation. The channel body (*including the projecting grate supports*) must be set in drainage mortar.

Our installation instructions apply.

### **Processing and care instructions**

The drainage channels should also be laid in accordance with the waterproofing manufacturer's specifications (e.g. *bitumen manufacturer, sheeting manufacturer, etc.*) if necessary, and precautionary measures e.g. construction protection mats should be laid.

The drainage channels can be cut to size. However, it must be ensured that the cutting medium (e.g. *saw blade, cutting disc, etc.*) is absolutely clean or does not contain any components of other metals, otherwise corrosion may occur. All interfaces (*hot-dip galvanised steel*) must be cold re-galvanised. In general, we recommend custom-made products ex works, as these are properly galvanised afterwards.

Dust particles of other metals or general cutting of components with flying sparks on the product are generally to be avoided. If dust particles or soiling of other metals are present, these must be removed immediately with appropriate cleaning agents.



Cleaning the gutters must not be done with strong acids or bases, but by hand with a broom or, if necessary, with a high-pressure cleaner.

If the gutter is used under canopies or roofing, it should be checked regularly for contamination and flushed as necessary, as only a little water is drained away and more deposits occur.

Further installation & usage instructions as well as information on the material can be found at: <https://www.richard-brink.de/downloads/gesamtuebersicht.html>