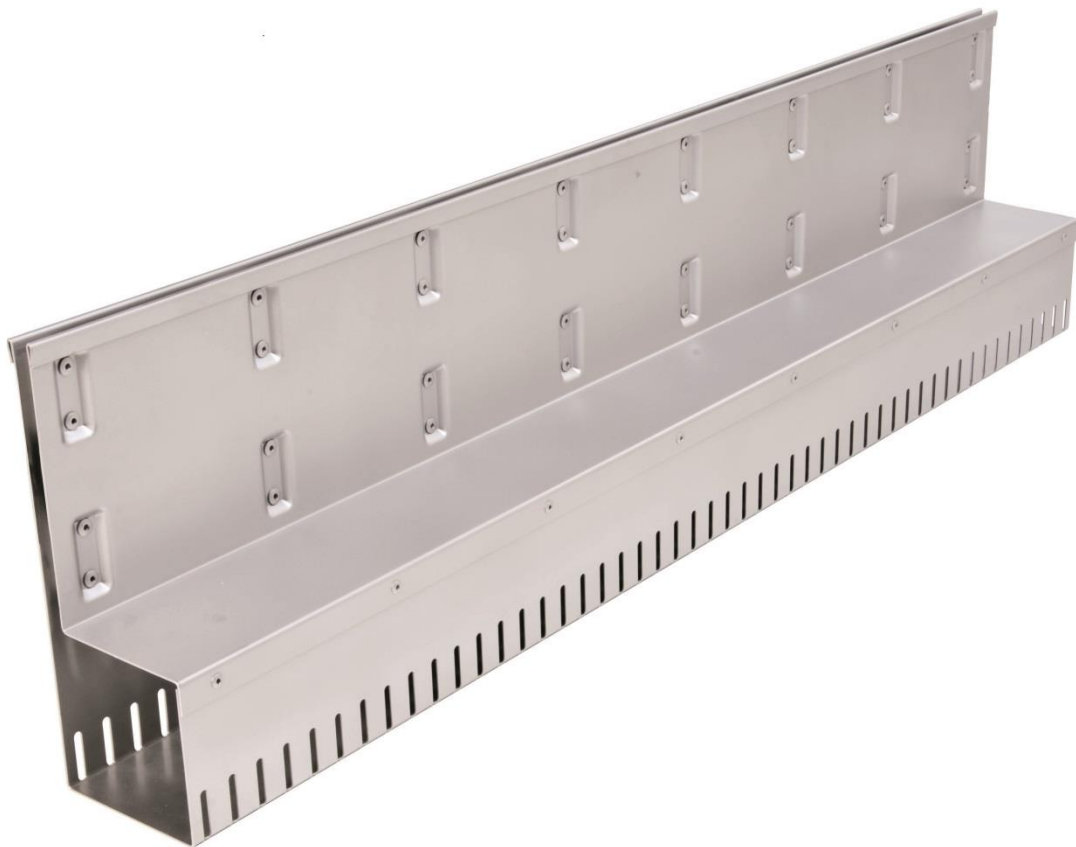




Technical data sheet

Lamina Fixed Slot Drainage Channel



Manufacturer

Richard Brink GmbH & Co KG
Metal goods manufacture and distribution
Görlitzer Str. 1
33758 Schloß Holte-Stukenbrock
Phone: 0049 (0)5207 9504-0
Fax: 0049 (0)5207 9504-20

Status: 02/22



Product description

The Lamina Fix slotted drainage channel is a channel body with a fixed installation height. The slotted top is firmly riveted on. The channel body can optionally be supplied with lateral perforation or closed.

The slotted top is provided with 8 stiffening embossments per metre. This gives the channel body significantly increased stability against shear forces.

The channel is available in stainless steel (V2A) and hot-dip galvanised steel.

The material thickness in both materials is 1.5 mm.

Load class

The channel is designed in accordance with load class A15 (*walkable*).

(Possible to be based on class B125 with sufficiently dimensioned concrete foundation).

Dimensions

The gutter is supplied in the following standard dimensions.

Slot width:	10 mm
Neck height:	65/95/160 mm
Total width:	100 mm
Total height:	140/170/260 mm

The standard channel length is 1,000 mm. One-piece lengths are available up to 1,500 mm on request.

At the customer's request, all dimensions can be modified and supplied as custom-made products.



Inlet cross-sections of the slot attachments

Slot attachment with a slot width of 10 mm: 100 cm²/m

Outlet cross-section of the channel through lateral perforation and perforation

Perforation on one side: 72.31 cm²/m

Perforation on both sides: 144.62 cm²/m

Larger outlet cross-sections by arrangement.

Accessories

- end pieces left, end pieces right
- connector
- revision and cistern

Important notes

When installing on a sealed concrete slab (*balconies, roof areas*), a protective film (*made of suitable material, e.g. EPDM film*) must be installed between the gutter and the waterproofing membrane at least to the width of the gutter in order to permanently protect the waterproofing.

When installing on a ballast base course, this must be sufficiently compacted to prevent subsequent settlement. The channel must rest on the base course.

Our installation instructions apply.

Materials used

We use only European material from Germany, Sweden, France and Italy for our products.



Material Specification Channel Body and Slot Top

Stainless steel V2A (1.4301) or hot-dip galvanised sheet steel.

Material thickness: 1.5 mm

Processing and care instructions

The drainage slot channels must also be installed, if necessary, in accordance with the waterproofing manufacturer's specifications (e.g. *bitumen manufacturer, sheeting manufacturer, etc.*); precautionary measures, e.g. construction protection mats, must be installed if necessary.

The drainage slot channels can be cut to size. However, it must be ensured that the cutting medium (e.g. *saw blade, cutting disc, etc.*) is absolutely clean or does not contain any components of other metals, as otherwise corrosion may occur. All interfaces (*hot-dip galvanised steel*) must be cold re-galvanised. In general, we recommend custom-made products ex works, as these are properly galvanised afterwards.

Dust particles of other metals or general cutting of components with flying sparks on the product are generally to be avoided. If dust particles or soiling of other metals are present, these must be removed immediately with appropriate cleaning agents.

Cleaning the gutters must not be done with strong acids or bases, but by hand with a broom or, if necessary, with a high-pressure cleaner.

If the gutter is used under canopies or roofing, it should be checked regularly for contamination and flushed as necessary, as only little water is drained away and more deposits occur.

Further installation & usage instructions as well as information on the material can be found under:

<https://www.richard-brink.de/downloads/gesamtuebersicht.html>