

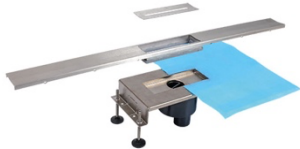
Bildunterschriften



Image

File name

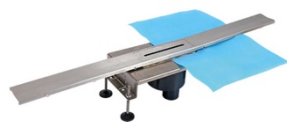
Caption



RichardBrink_SecaCentralis
_01

The Seca shower-channel system consists of a stainless-steel drain body complete with nozzle and siphon as well as a channel profile that utilises an insertable attachment.

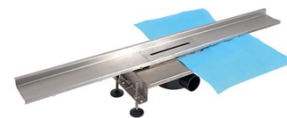
Photo: Richard Brink GmbH & Co. KG



RichardBrink_SecaCentralis
_02

The new product is factory-fitted with an extensive sealing collar and can also be easily adapted to any installation situation thanks to the height-adjustable articulated feet.

Photo: Richard Brink GmbH & Co. KG

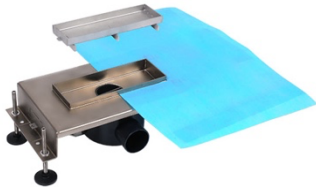


RichardBrink_SecaCentralis
_03

The drain bodies can be supplied for a central or, as illustrated here, a wall-side connection. The channel profiles themselves can be cut to the required length.

Photo: Richard Brink GmbH & Co. KG

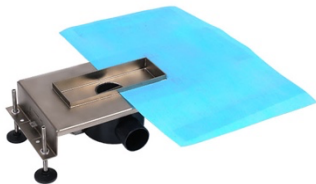
Bildunterschriften



RichardBrink_SecaCentralis
_04

The Centralis point drainage unit is a single-part drain body made from stainless steel with a central tiled tray.

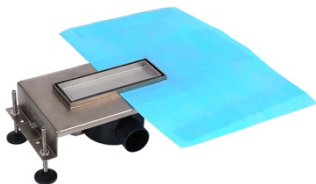
Photo: Richard Brink GmbH & Co. KG



RichardBrink_SecaCentralis
_05

This new product also comes with a sealing collar and height-adjustable articulated feet as standard.

Photo: Richard Brink GmbH & Co. KG



RichardBrink_SecaCentralis
_06

Tiles can be laid right up to the edge of the tiled tray base during installation, creating an exceptionally minimalistic aesthetic in the shower area.

Photo: Richard Brink GmbH & Co. KG