



Integrated green roof systems

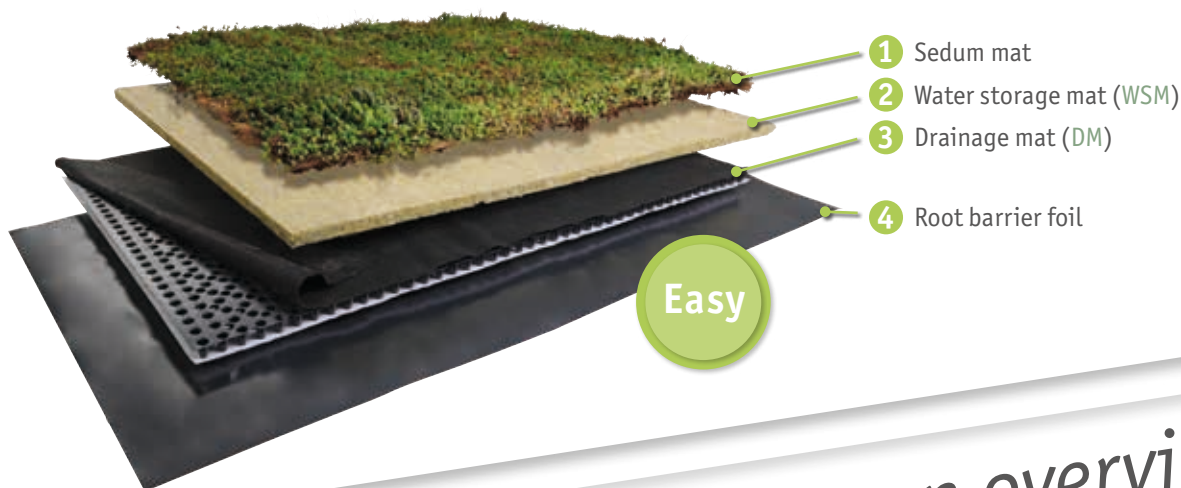
From planting to drainage and dewatering



“Easy”-System: *the lightweight green roof*

The name says it all: the Easy roof planting system has a streamlined configuration, whereby all its layers are rolled out across the roof surface. It stands out for its low weight, while still boasting a high moisture-absorption capacity thanks to the use of a water storage mat.

	Roof up to 15° with DM 17, WSM 25	Roof up to 15° with DM 17, WSM 50	Flat roof with DM 27, WSM 25	Flat roof with DM 27, WSM 50
Installation height	62 mm	87 mm	72 mm	97 mm
Unsaturated weight	18.00 kg/m ²	20.00 kg/m ²	18.30 kg/m ²	20.30 kg/m ²
Saturated weight	42.30 kg/m ²	59.30 kg/m ²	44.10 kg/m ²	61.10 kg/m ²
Water storage capacity	24.30 l/m ²	39.30 l/m ²	25.80 l/m ²	40.80 l/m ²



Our green roof systems: an overview

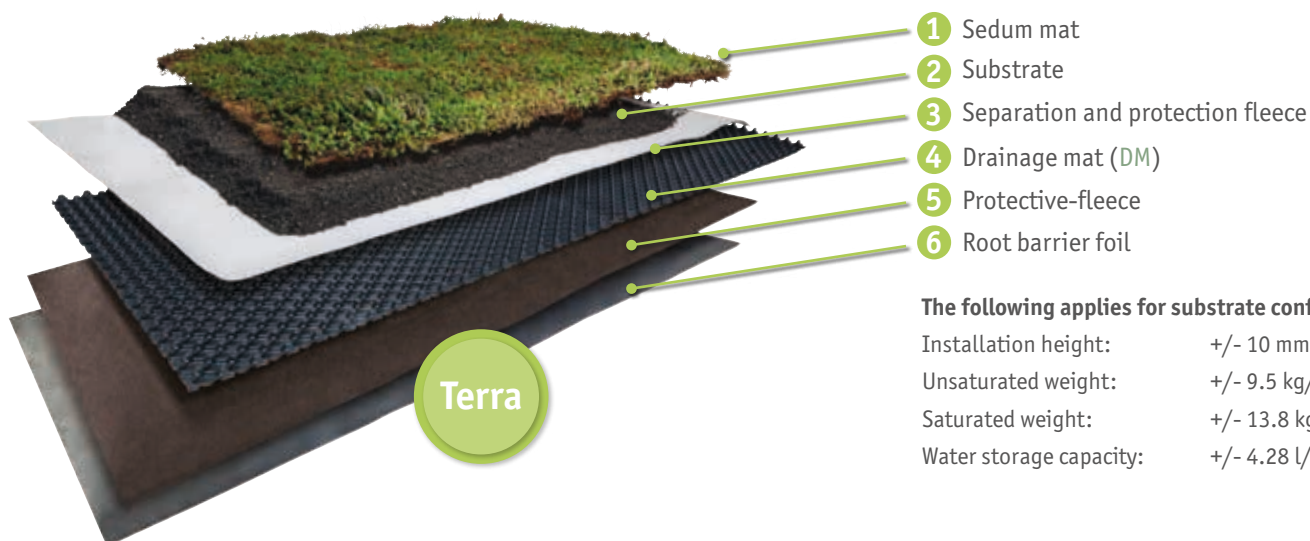
Everything for planted roof structures from a single source

Even beyond our integrated green roof systems, our range of products has everything you need to take care of roof planting and the drainage of excess rainwater in accordance with the applicable regulations. Take a look at the next few pages and discover our precisely-fitting products and solutions that we adjust to your individual needs.

“Terra”-System: *substrate instead of water storage mat*

The Terra system is based entirely on a substrate layer. Through the use of different drain mats and installation heights, it is extremely flexible and can be adapted to the vegetation – regardless of whether delayed drainage or water retention is preferred.

	Roof up to 15° with DM 25, 60 mm substrate	Roof up to 15° with DM 40, 60 mm substrate
Installation height	109 mm	124 mm
Unsaturated weight	82.32 kg/m ²	82.70 kg/m ²
Saturated weight	110.52 kg/m ²	114.90 kg/m ²
Water storage capacity	28.20 l/m ²	32.20 l/m ²



The following applies for substrate configurations:

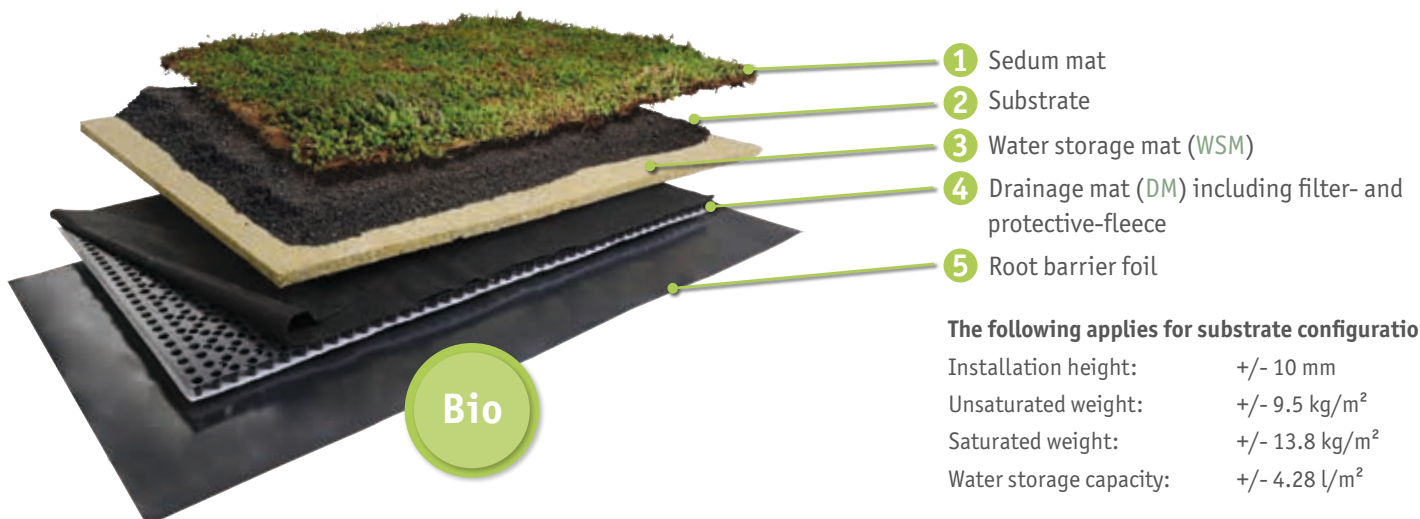
Installation height:	+/- 10 mm
Unsaturated weight:	+/- 9.5 kg/m ²
Saturated weight:	+/- 13.8 kg/m ²
Water storage capacity:	+/- 4.28 l/m ²



“Bio”-System: *substrate + water storage in XXL*

The Bio system is the most comprehensive green roof system of the three. It combines the benefits of both the water storage mat and the substrate layer in one integrated solution. Thanks to its composition, it achieves the highest water storage capacity and is suitable for varied vegetation.

	<i>Roof up to 15° with DM 17, WSM 25, 60 mm substrate</i>	<i>Roof up to 15° with DM 17, WSM 50, 60 mm substrate</i>	<i>Flat roof with DM 27, WSM 25, 60 mm substrate</i>	<i>Flat roof with DM 27, WSM 50, 60 mm substrate</i>
Installation height	122 mm	147 mm	132 mm	157 mm
Unsaturated weight	84.00 kg/m ²	86.00 kg/m ²	84.30 kg/m ²	86.30 kg/m ²
Saturated weight	126.30 kg/m ²	143.30 kg/m ²	128.10 kg/m ²	145.10 kg/m ²
Water storage capacity	42.30 l/m ²	57.30 l/m ²	43.80 l/m ²	58.80 l/m ²



Bio

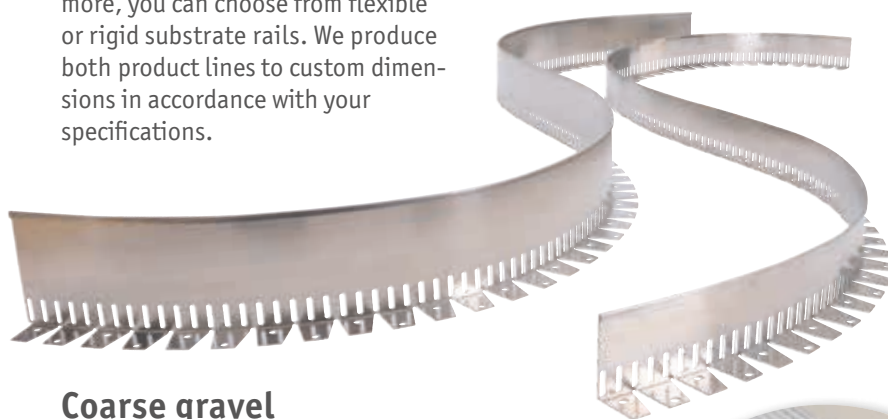
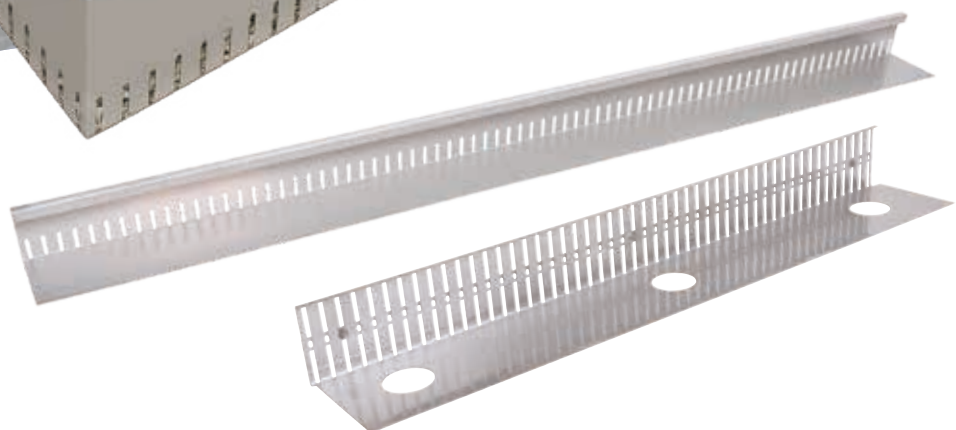
The following applies for substrate configurations:

Installation height:	+/- 10 mm
Unsaturated weight:	+/- 9.5 kg/m ²
Saturated weight:	+/- 13.8 kg/m ²
Water storage capacity:	+/- 4.28 l/m ²



Gravel stops and substrate rails

Give your green roof a bespoke frame, made-to-measure. We offer height-adjustable or fixed gravel stops to contain loose fills and control the drainage of excess water. What's more, you can choose from flexible or rigid substrate rails. We produce both product lines to custom dimensions in accordance with your specifications.



Coarse gravel

The use of coarse gravel along the edges of green roofs comes with multiple benefits. First, it prevents soil and substrates from being rinsed out down the façade. Second, it supports the effective drainage of the roof surface and creates areas that are free of vegetation. We offer coarse gravel in a grain size of 16 - 32mm and supply it in the quantity you need.





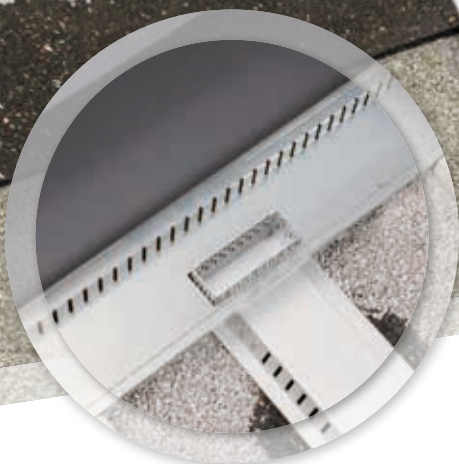
Drainage and dewatering systems

Choose from our broad range of products, including all kinds of dewatering and drainage solutions for roof surfaces, terraces and balconies. We produce everything from channels and gratings, which can also be manufactured in custom dimensions, over to special solutions such as our revisable **Subterra branch channel** system, which is securely connected to our drainage channels by means of an adapter.

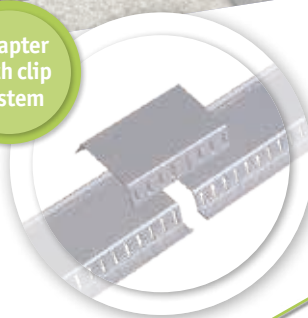


The height-adjustable **Hydra drainage channel** can be raised or lowered to the required height on site thanks to the use of a screwed connection.





Adapter
with clip
system



Branch
channel
connection



"Subterra" branch channel

Connections made easy – this can certainly be said of our revisable Subterra branch channel system. Pre-perforated cut-out sections along our drainage channels allow a secure connection to the branch channel with the help of an adapter featuring an integrated dirt trap. A clip system is used to assemble the branch channels quickly and easily, while connectors help expand the system as required.

Change direction flexibly on site: our branch channel corners enable you to create several angles and determine your preferred drainage course. For example, a 90° corner can be divided into two 45° corners and a 30° corner into two 15° corners.



1 x 30°
or
2 x 15°

1 x 90°
or
2 x 45°



"Subterra" inspection shaft for green roof applications

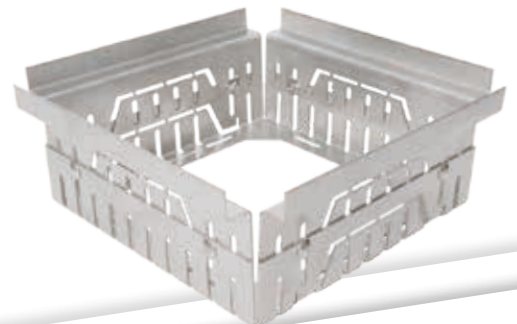
Inspection shafts to aid the visual examination of drains form part of the Subterra system and feature cut-out sections on three of the four sides to connect branch channels. The 100mm-high shafts can optionally be raised by 50mm or 100mm using stacking elements, with custom measurements also possible in line with client specifications. The image above shows the inspection shaft in use.

Branch
channel
connection



Drainage gullies

Create your own, individual dewatering system from our large range of products encompassing various dewatering and drainage solutions for roof surfaces, terraces and balconies. Alongside our channel systems, we also offer height-adjustable gullies and a large selection of cover gratings, which we can always make to measure on request. All of the gullies, drainage channels and inspection shafts can be connected to our Subterra branch channel to create reliable and revisable roof and balcony dewatering systems.



Branch
channel
connection

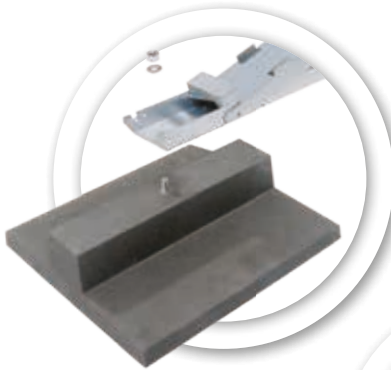
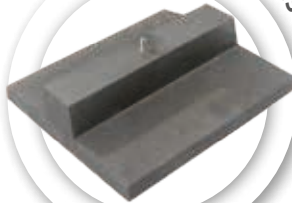
Mounting system for solar substructures

The mounting systems for our Miralux solar substructures make for a functional combination of photovoltaic system and green roof. Raising the systems leaves plenty of room for vegetation and improves the plants' exposure to light.

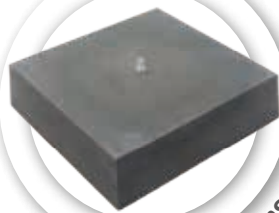
We also produce screwable ballast blocks made from polymer concrete that ensure both the solar substructures and the stands are held securely in place. Weighing in at up to 34 kilograms, the blocks guarantee a safe installation on the roof surface. They also lift the solar substructures a little, allowing room for gravel fills and plant cover to run underneath the structures.



approx. 16 kilograms



approx. 34 kilograms



Your green roof experts:

Richard Brink GmbH & Co. KG
Metalware Production and Sales
www.richard-brink.com



Matthias Koch

T +49 (0)5207 95 04-215
F +49 (0)5207 95 04-20
M matthias.koch@richard-brink.de



Tobias Koch

T +49 (0)5207 95 04-210
F +49 (0)5207 95 04-20
M tobias.koch@richard-brink.de