

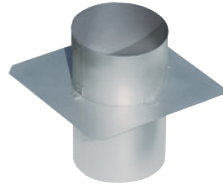


# Info sheet on installation of chimney caps

If you have any questions, do not hesitate to contact us: 0049 (0)52 07 / 95 04-0

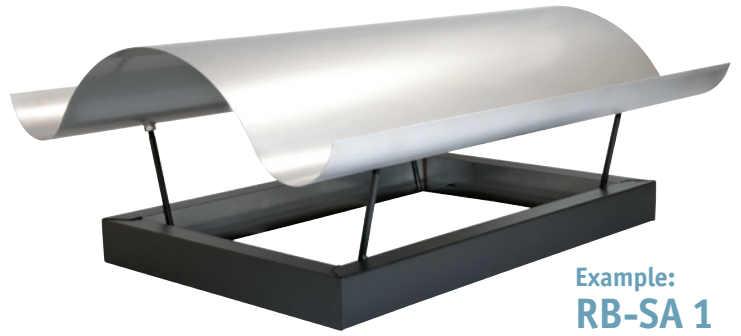
First of all the shuttering frame is adjusted on the chimney. Hereby, the lower leg of the framer is so extended that it is one centimetre above the chimney <sup>1</sup>.

In this way, the concrete to be poured in later, cannot run into the rear ventilation of the cladding. The expansion joint plate, which is set in the draught of the chimney, fulfils a similar function and its base plate (b) prevents the concrete from running into the draught <sup>2</sup>.

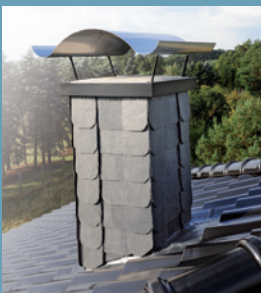


The expansion joint plate should be adjusted in such a way, that the biggest possible part of the chimney surface remains free, to be able to bond with the concrete. If the poured in concrete hardens in the shuttering

frame, the chimney cap is firmly connected to the chimney <sup>3</sup>. So, a system arises as if from a single casting. Finally, the cap is placed on the support struts of the shuttering frame, and screwed on using nuts <sup>4</sup>.



Example:  
**RB-SA 1**



## Installation-Video!

Richard Brink @ YouTube

