



Your experts for gardening  
and landscaping  
Partner of the North  
Rhine-Westphalia  
Association of Gardening,  
Landscaping and  
Recreation Construction

# *Spring brochure* **Planting systems** **2024**





*Edging solutions*  
**One *p*roduct. m**



*and lawn edges*  
**any applications**



# Ora | Straight lawn edgings

Standard length: 3.000mm



Stainless steel

Item designation	Height	Example prices per running metre (rm) RRP excl. VAT							
		3 rm	9 rm	18 rm	30 rm	51 rm	102 rm	201 rm	402 rm
BE G 10-100-50 VA	100 mm	51,16 €/m	36,79 €/m	32,18 €/m	29,52 €/m	27,69 €/m	25,76 €/m	24,05 €/m	22,46 €/m
BE G 10-150-50 VA	150 mm	58,69 €/m	44,00 €/m	39,07 €/m	36,09 €/m	33,94 €/m	31,68 €/m	29,64 €/m	27,74 €/m

Aluminium

Item designation	Height	Example prices per running metre (rm) RRP excl. VAT							
		3 rm	9 rm	18 rm	30 rm	51 rm	102 rm	201 rm	402 rm
BE G 10-100-50 AL	100 mm	35,88 €/m	21,80 €/m	17,78 €/m	15,76 €/m	14,59 €/m	13,33 €/m	12,28 €/m	11,37 €/m
BE G 10-150-50 AL	150 mm	38,39 €/m	24,20 €/m	20,07 €/m	17,94 €/m	16,67 €/m	15,30 €/m	14,14 €/m	13,12 €/m

Corten steel

Item designation	Height	Example prices per running metre (rm) RRP excl. VAT							
		3 rm	9 rm	18 rm	30 rm	51 rm	102 rm	201 rm	402 rm
BE G 10-100-50 CS	100 mm	36,68 €/m	23,16 €/m	19,22 €/m	17,19 €/m	15,97 €/m	14,66 €/m	13,55 €/m	12,57 €/m
BE G 10-150-50 CS	150 mm	39,85 €/m	26,19 €/m	22,11 €/m	19,95 €/m	18,60 €/m	17,15 €/m	15,90 €/m	14,97 €/m

## Fixed connectors (straight)

Stainless steel  
Corten steel

Item designation	Height	Material	RRP excl. VAT
BE V 100 AL/VA	100 mm	Stainless steel	3,18 €/piece
BE V 150 AL/VA	150 mm	Stainless steel	3,88 €/piece
BE V 100 CS	100 mm	Corten	2,66 €/piece
BE V 150 CS	150 mm	Corten	3,01 €/piece

## Combination connectors (flexible)

Stainless steel  
Corten steel

Item designation	Height	Material	RRP excl. VAT
BE V 100 AL/VA K	100 mm	Stainless steel	5,63 €/piece
BE V 150 AL/VA K	150 mm	Stainless steel	6,71 €/piece
BE V 100 CS K	100 mm	Corten	5,16 €/piece
BE V 150 CS K	150 mm	Corten	5,88 €/piece



Prices and dimensions may contain errors.

## Product description

Our flower bed edging solutions are well suited for both new and existing flower beds. A strip of earth is simply dug out along the edge of the flower bed, which is where the supporting base will be fixed in place. The top of the edging solution should sit approximately one centimetre above the height of the flower bed or turf.

The edging solution is fixed to the ground using steel pins, which are pushed through the offset holes in the supporting base. The design of the base not only ensures the edging is held

firmly in place; it also prevents it from sinking into the ground over time. Any pressure exerted on the edging by people or machines is resisted by the supporting base.

Metal plates connect the edging sections: they are slotted in at the back and screwed in place, creating transitions that trace the desired bed shape perfectly.

In spite of its name, the product can also be used to create borders for paved, gravel and granulate fills.



See our videos!  
Richard Brink @ YouTube

# Ora | Flexible lawn edgings

Standard length: 3.000mm



Stainless steel

Item designation	Height	Example prices per running metre (rm) RRP excl. VAT							
		3 rm	9 rm	18 rm	30 rm	51 rm	102 rm	201 rm	402 rm
BE F 10-100-50 VA	100 mm	56,80 €/m	42,19 €/m	37,34 €/m	34,44 €/m	32,37 €/m	30,20 €/m	28,24 €/m	26,41 €/m
BE F 10-150-50 VA	150 mm	64,34 €/m	49,41 €/m	44,23 €/m	41,01 €/m	38,61 €/m	36,12 €/m	33,84 €/m	31,69 €/m

Aluminium

Item designation	Height	Example prices per running metre (rm) RRP excl. VAT							
		3 rm	9 rm	18 rm	30 rm	51 rm	102 rm	201 rm	402 rm
BE F 10-100-50 AL	100 mm	41,69 €/m	27,37 €/m	23,09 €/m	20,83 €/m	19,41 €/m	17,89 €/m	16,60 €/m	15,44 €/m
BE F 10-150-50 AL	150 mm	44,20 €/m	29,77 €/m	25,38 €/m	23,01 €/m	21,49 €/m	19,86 €/m	18,46 €/m	17,19 €/m

Corten steel

Item designation	Height	Example prices per running metre (rm) RRP excl. VAT							
		3 rm	9 rm	18 rm	30 rm	51 rm	102 rm	201 rm	402 rm
BE F 10-100-50 CS	100 mm	42,22 €/m	28,46 €/m	24,28 €/m	22,02 €/m	20,56 €/m	19,01 €/m	17,67 €/m	16,45 €/m
BE F 10-150-50 CS	150 mm	45,39 €/m	31,49 €/m	27,18 €/m	24,78 €/m	23,19 €/m	21,50 €/m	20,02 €/m	18,67 €/m

## Combination connectors (flexibel)

Stainless steel  
Corten steel

Item designation	Height	Material	RRP excl. VAT
BE V 100 AL/VA K	100 mm	Stainless steel	5,63 €/piece
BE V 150 AL/VA K	150 mm	Stainless steel	6,71 €/piece
BE V 100 CS K	100 mm	Corten	5,16 €/piece
BE V 150 CS K	150 mm	Corten	5,88 €/piece



Visible border  
10 mm

Flange section  
50 mm

Prices and dimensions may contain errors.



## Product description

No shape is off limits with the flexible edging solutions. The toothed design of the supporting base allows the segments to be curved as desired. For more information on how to install the solution, please refer to the description for the straight solutions on the opposite page.

In spite of its name, the product can also be used to create borders for paved, gravel and granulate fills.





*Raised beds – for*  
**U**nique and





*vertical landscaping*  
**tailor-made!**



## Modular | Raised beds

Until now, our raised beds have stood out, among other things, for their custom manufacture in line with individual specifications. With the new Modular model, we now offer a more affordable entry-level version featuring a high level of production quality that can be conveniently configured and ordered online.

The new raised beds are an extension of our tried-and-tested Modular plant box series, which facilitates the creation of high-quality planting systems by arranging standardised components in a modular way. The new range follows this same approach and takes the Modular line into the raised bed segment.

### Variable assembly, top quality

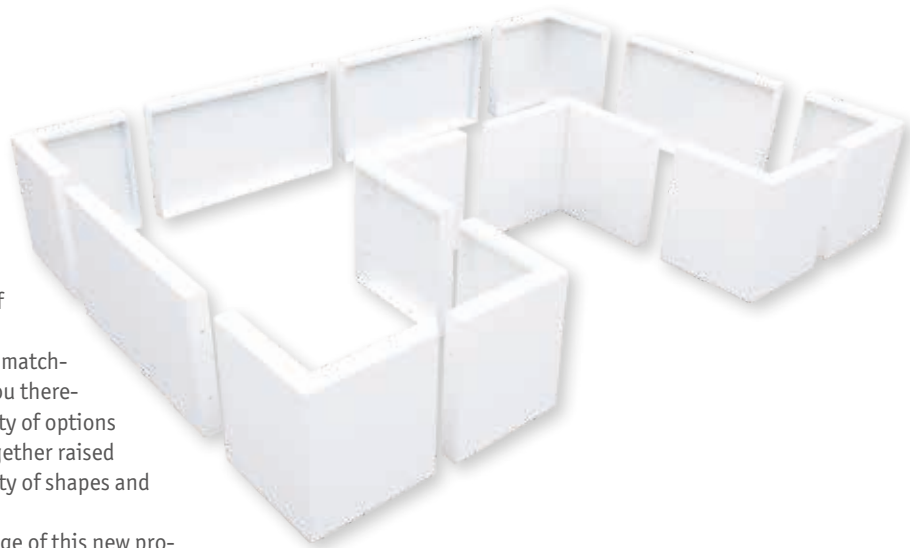
The system is comprised of rectangular and corner elements and can be easily and attractively designed and ordered using a specially

developed configurator available on our website, which gives you a choice of different wall elements with matching corners. You therefore have plenty of options for putting together raised beds in a variety of shapes and sizes.

The advantage of this new product lies primarily in its appealing combination of quality and purchase costs, allowing a more affordable introduction to our raised bed segment than the otherwise custom-made versions. And you don't have to compromise on the high quality of the planting systems: we produce the components in either coated aluminium in all RAL colours or corten steel, each with a material thickness of 2mm. Due to the relatively small footprint of the wall elements that make up the bed, additional tie rods are always supplied with the Modular raised

bed models. These give the products the stability they need to function reliably for years to come as a timelessly beautiful way of adding greenery to outdoor areas or even as a raised fruit or herb bed.

Whether large or small, as a square, rectangle or a whole host of other shapes, with a subtle look or as a colourful highlight: you can put together a ready-to-order Modular variant in just a few clicks that fully reflects your personal preferences.



### Can be designed using the online configurator

- Tie rods included
- Powder coating (all RAL colours)





# Janus | Raised beds (Adaptable plug-in systems)



The new Janus raised bed system made from coated, double-walled, extruded aluminium profiles impresses with its adaptable look and stability besides the fact that it's easy to assemble on site: the corner elements and panels are simply plugged into each other and held in place with screwed connections.

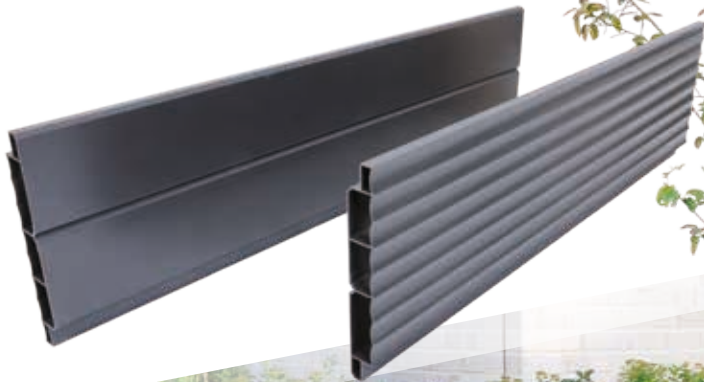
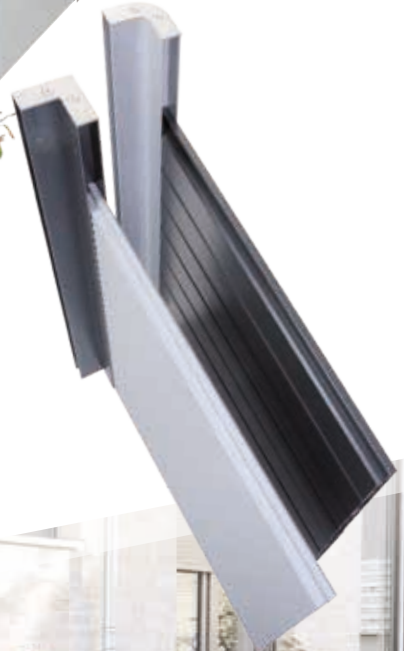
The double-walled design complete with insulating air chambers inside the profiles protects plants from dehydration and frost.

The two sides of the aluminium panels offer two different finishes. One side appears to be made of moulded wooden boards, while the other has a subtly undulating and somewhat retro look reminiscent of a bygone age of aircraft construction.

The panels are slotted into the corner elements with the preferred side facing outwards before being fixed in place on the inside using self-tapping screws.

The corner elements are also available in two designs, with the choice of a rounded or squared finish.

The raised beds come in one or two colours, depending on personal preference; panels and corner elements are simply given different coatings. A dark-light contrast further enhances the structure of the raised beds.



# Artus | Raised bed modules as a plug-in system

Lengths of up to 3.000mm feasible with just one part.

Custom measurements  
Upon request

Polished  
Stainless steel v2A

Item designation	Height	Support base	Upper backward bend	Material thickness	RRP excl. VAT
HB 275-160-30-30 VA	275 mm	160 mm	30 x 30 mm	3.0 mm	159,55 €/m
HB 415-190-30-30 VA	415 mm	190 mm	30 x 30 mm	3.0 mm	240,84 €/m
HB 500-190-30-30 VA	500 mm	190 mm <td>30 x 30 mm</td> <td>3.0 mm</td> <td>280,95 €/m</td>	30 x 30 mm	3.0 mm	280,95 €/m
HB 550-190-30-30 VA	550 mm	190 mm	30 x 30 mm	3.0 mm	312,45 €/m
HB 700-235-35-30 VA	700 mm	235 mm	35 x 30 mm	4.0 mm	497,42 €/m
HB 900-285-35-30 VA	900 mm	285 mm	35 x 30 mm	4.0 mm	629,66 €/m
HB 1100-335-35-30 VA	1.100 mm	335 mm	35 x 30 mm	5.0 mm	961,32 €/m
HB S VA (custom-made)	Custom dimensions			Proportional	Upon request



The image shows a cross-section of our raised bed structure. The raised bed wall 1 together with the backward bend 2 and support base 3 is stabilised using a gusset plate 4.

Prices for RAL coatings available upon request

Aluminium

Item designation	Height	Support base	Upper backward bend	Material thickness	RRP excl. VAT
HB 275-160-30-30 AL	275 mm	160 mm	30 x 30 mm	3.0 mm	85,31 €/m
HB 415-190-30-30 AL	415 mm	190 mm	30 x 30 mm	3.0 mm	113,76 €/m
HB 500-190-30-30 AL	500 mm	190 mm	30 x 30 mm	3.0 mm	137,31 €/m
HB 550-185-35-30 AL	550 mm	185 mm	35 x 30 mm	4.0 mm	188,22 €/m
HB 700-235-35-30 AL	700 mm	235 mm	35 x 30 mm	4.0 mm	231,19 €/m
HB 900-285-35-30 AL	900 mm	285 mm	35 x 30 mm	5.0 mm	338,88 €/m
HB 1100-335-35-30 AL	1.100 mm	335 mm	35 x 30 mm	6.0 mm	504,95 €/m
HB S AL (custom-made)	Custom dimensions			Proportional	Upon request

Prices and dimensions may contain errors.



Plug-in system



## Product description

The raised beds are made up of several segments that are easily joined together using plug-in connections for quick, straightforward assembly. Standard raised beds can thus be extended individually and flexibly.

The angled shape of the raised beds guarantees a high level of stability, which is reinforced further through the integration of gusset plates in the individual segments. We recommend also

using tie rods for beds taller than 415mm.

This helps them withstand the pressure of being filled with planting soil without buckling. The open frame

construction allows plants to thrive as there is no base element to prevent direct contact with the ground below. The roots can therefore reach and penetrate the earth underneath the raised beds.

The corners are produced in side lengths of 500mm as standard. A corner surcharge is calculated on top of the resulting metre. For more information on pricing, please see the opposite page.



Side lengths and angles can also be made to measure.

ALL RAL colours possible



# Artus | Raised bed modules as a plug-in system

Lengths of up to 3.000mm feasible with just one part.



Corten steel

Item designation	Height	Support base	Upper backward bend	Material thickness	RRP excl. VAT
HB 275-160-30-30 CS	275 mm	160 mm	30 x 30 mm	3.0 mm	102,06 €/m
HB 415-190-30-30 CS	415 mm	190 mm	30 x 30 mm	3.0 mm	140,44 €/m
HB 500-190-30-30 CS	500 mm	190 mm	30 x 30 mm	3.0 mm	168,30 €/m
HB 550-190-30-30 CS	550 mm	190 mm	30 x 30 mm	3.0 mm	194,13 €/m
HB 700-235-35-30 CS	700 mm	235 mm	35 x 30 mm	4.0 mm	292,21 €/m
HB 900-285-35-30 CS	900 mm	285 mm	35 x 30 mm	4.0 mm	373,01 €/m
HB 1100-335-35-30 CS	1.100 mm	335 mm	35 x 30 mm	5.0 mm	678,18 €/m
HB S CS (custom-made)	Custom dimensions		Proportional		Upon request

Corner surcharge for stainless steel V2A, aluminium and corten steel

## Corner surcharge

Applies to both inner and outer corners.

Item designation	Surcharge
HB * 275-160-30-30	46,28 €
HB * 415-190-30-30	58,49 €
HB * 500-190-30-30	61,47 €
HB * 550-190-30-30	61,40 €
HB * 700-235-35-30	68,59 €
HB * 900-285-35-30	74,61 €
HB * 1100-335-35-30	85,46 €
HB * S (custom-made)	Upon request

Prices and dimensions may contain errors.



Plug-in system



Your experts for gardening and landscaping

Partner of the "Garten(t)räume" exhibition hosted by the German Association of Gardening, Landscaping and Recreation Construction (BGL) at the 2016 + 2018 GaLaBau trade fairs in Nuremberg

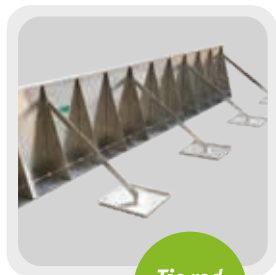
We also create bespoke solutions in the dimensions, shapes and colours specified by the customer. Even curved and organic shapes are possible upon request, as seen in these examples from the 2016 GaLaBau in Nuremberg.



Round versions possible



From 415 mm height we recommend tie rods



Tie rod trays





*Plant boxes – sta*  
**Showcasing p**





*Standard or custom-made*  
**planters in style**



# Basio & Clarus | Monolithic plant boxes – the perfect foundation for any greenery

Small and compact – or perhaps as an individual custom design? The range of choices offered with our Basio and Clarus plant boxes gives you right solution for your outdoor area at all times. The Basio is the smallest version of our plant boxes and is ideal for installation locations where space is at a premium, while the Clarus is custom-made to your own specifications. Both products have their seamless welded joints to thank their for monolithic appearance.

With their range of possible dimensions, plant boxes work for a plethora of applications. In practice, they are often used to add a touch of greenery to terraces or balconies, create a signature feature in a building entrance, or provide privacy in outdoor areas. Depending on the model, installation site and soil depth, customers are more or less free to let their imagination run wild when it comes to planting. Similarly, the plant boxes themselves offer a good amount of design freedom. Have

you seen our new variants with the monolithic look?

## Basio – simple and compact

With its compact dimensions, our Basio model made from 2mm-thick corten steel forms the perfect foundation for all types of planting. Choose from a rectangular or square base. Order, unpack, plant – it couldn't be simpler with the Basio. Unlike other plant boxes from our product range, the Basio requires no further assembly after delivery. The plant box has its seamless welded joints to thank for its monolithic appearance. To keep your plants thriving for years to come, even during frosty or hot conditions, we recommend lining the inside with 20mm-thick XPS panels. We're happy to take care of this for you.

## Clarus – the Basio's big brother

Our Clarus is an extension of the Basio and is essentially its big brother. This monolithic plant box again impresses with its fully watertight welded design with no visible welding seams, meaning it

can also be used in indoor spaces. An internal nozzle guarantees the controlled drainage of irrigation water or precipitation. Alternatively, the base plate can also be supplied with a simple cut-out. The Clarus is a custom-made product manufactured to your specifications. Moreover, the plant box is available in corten steel, stainless steel or coated aluminium in all RAL colours, each available from a material thickness of 3mm. We also supply accessories such as welded feet or wheels.



Clarus  
more Info



Clarus

Basio  
more Info



# Basio | This corten steel planter is the ideal base for any plant



## Basio | made of corten steel 2.0 mm

Square shape

Item designation	Height	Width	Depth	RRP excl. VAT
PKB Q 400-400-400 CS	400 mm	400 mm	400 mm	135,65 €
PKB Q 500-500-500 CS	500 mm	500 mm	500 mm	181,00 €
PKB Q 600-600-600 CS	600 mm	600 mm	600 mm	233,89 €
PKB Q 700-700-700 CS	700 mm	700 mm	700 mm	294,32 €
PKB Q 400-800-800 CS	400 mm	800 mm	800 mm	258,55 €
PKB Q 600-800-800 CS	600 mm	800 mm	800 mm	336,14 €
PKB Q 800-800-800 CS	800 mm	800 mm	800 mm	388,02 €
PKB Q 400-1000-1000 CS	400 mm	1.000 mm	1.000 mm	363,34 €
PKB Q 600-1000-1000 CS	600 mm	1.000 mm	1.000 mm	427,29 €
PKB Q 800-1000-1000 CS	800 mm	1.000 mm	1.000 mm	516,94 €
PKB Q 1000-1000-1000 CS	1.000 mm	1.000 mm	1.000 mm	589,46 €
PKB Q 400-1200-1200 CS	400 mm	1.200 mm	1.200 mm	474,17 €
PKB Q 600-1200-1200 CS	600 mm	1.200 mm	1.200 mm	567,32 €
PKB Q 800-1200-1200 CS	800 mm	1.200 mm	1.200 mm	660,48 €

Rectangular shape

PKB R 400-400-800 CS	400 mm	400 mm	800 mm	209,74 €
PKB R 400-400-1000 CS	400 mm	400 mm	1.000 mm	221,71 €
PKB R 400-400-1200 CS	400 mm	400 mm	1.200 mm	232,14 €
PKB R 400-400-1500 CS	400 mm	400 mm	1.500 mm	276,17 €
PKB R 500-500-1000 CS	500 mm	500 mm	1.000 mm	264,14 €
PKB R 500-500-1200 CS	500 mm	500 mm	1.200 mm	310,00 €
PKB R 500-500-1500 CS	500 mm	500 mm	1.500 mm	348,71 €
PKB R 600-500-1000 CS	600 mm	500 mm	1.000 mm	376,17 €
PKB R 600-500-1200 CS	600 mm	500 mm	1.200 mm	397,14 €
PKB R 600-500-1500 CS	600 mm	500 mm	1.500 mm	421,85 €
PKB R 800-400-800 CS	800 mm	400 mm	800 mm	401,68 €
PKB R 800-400-1000 CS	800 mm	400 mm	1.000 mm	411,68 €
PKB R 800-400-1200 CS	800 mm	400 mm	1.200 mm	472,82 €
PKB R 800-400-1500 CS	800 mm	400 mm	1.500 mm	505,40 €

Prices and dimensions may contain errors.



Made entirely from 2mm corten steel, this plant box has an almost monolithic appearance thanks to its *seamless welded joints*.

### Protection against frost and dehydration

The Basio model can be lined with 20mm-thick Styrodur, as needed. This provides the plants with *optimal insulation*, which protects equally against frost and dehydration.



# Modular Ventus | Aluminum planter boxes with glass partition

This plant box system with integrated glass screen wall not only provides privacy and protection against wind. it also offers space for lavish planting or an elegant wooden seat.

The system can also be lined on the inside with 20mm-thick Styrodur, providing insulation as needed.

The planters are available in the standard colours **iron mica (DB 703)** and **traffic white (RAL 9016)**. Other RAL colours are available on request.



## 1. Modular Ventus with clear glass panel (rear) | made of aluminium 1.5 mm

Plant box height: **400 mm**. screen wall height: **1.650 mm** (also in heights of 1.450 mm und 1.850 mm)

Width \ Length	Recommended retail price excl. VAT						
	630 mm	880 mm	1.130 mm	1.380 mm	1.600 mm	1.800 mm	2.000 mm
440 mm	669,39 €	801,41 €	933,39 €	1.065,49 €	1.181,60 €	1.287,24 €	1.392,86 €

Plant box height: **650 mm**. screen wall height: **1.650 mm**

440 mm	669,42 €	790,53 €	911,68 €	1.032,72 €	1.139,23 €	1.236,11 €	1.332,96 €
--------	----------	----------	----------	------------	------------	------------	------------

## 2. Modular Ventus with clear glass panel (centre) | made of aluminium 1.5 mm

Plant box height: **400 mm**. screen wall height: **1.650 mm** (also in heights of 1.450 mm und 1.850 mm)

Width \ Length	Recommended retail price excl. VAT						
	630 mm	880 mm	1.130 mm	1.380 mm	1.600 mm	1.800 mm	2.000 mm
480 mm	671,16 €	803,77 €	936,38 €	1.072,43 €	1.183,33 €	1.291,93 €	1.398,04 €

Plant box height: **650 mm**. screen wall height: **1.650 mm**

480 mm	671,19 €	792,89 €	914,68 €	1.039,66 €	1.140,96 €	1.240,80 €	1.338,14 €
--------	----------	----------	----------	------------	------------	------------	------------

## 3. Modular Ventus with clear glass panel (rear) and bench | made of aluminium 1.5 mm

Plant box height: **400 mm**. screen wall height: **1.650 mm** (also in heights of 1.450 mm und 1.850 mm)

Width \ Length	Recommended retail price excl. VAT						
	630 mm	880 mm	1.130 mm	1.380 mm	1.600 mm	1.800 mm	2.000 mm
440 mm	941,51 €	1.181,53 €	1.421,49 €	1.665,44 €	1.872,72 €	2.069,74 €	2.256,74 €

Prices and dimensions may contain errors.





# Modular Ventus | Corten steel plant boxes with glass screen wall



## 1. Modular Ventus with clear glass panel (rear) | made of corten steel 1.5 mm

Plant box height: **400 mm**. screen wall height: **1.650 mm** (also in heights of 1.450 mm und 1.850 mm)

Width \ Length	Recommended retail price excl. VAT						
	630 mm	880 mm	1.130 mm	1.380 mm	1.600 mm	1.800 mm	2.000 mm
440 mm	631,37 €	759,67 €	887,95 €	1.016,59 €	1.129,26 €	1.237,50 €	1.334,55 €

Plant box height: **650 mm**. screen wall height: **1.650 mm**

440 mm	625,51 €	748,64 €	854,00 €	960,03 €	1.068,65 €	1.165,63 €	1.251,38 €
--------	----------	----------	----------	----------	------------	------------	------------

## 2. Modular Ventus with clear glass panel (centre) | made of corten steel 1.5 mm

Plant box height: **400 mm**. screen wall height: **1.650 mm** (also in heights of 1.450 mm und 1.850 mm)

Width \ Length	Recommended retail price excl. VAT						
	630 mm	880 mm	1.130 mm	1.380 mm	1.600 mm	1.800 mm	2.000 mm
480 mm	633,64 €	762,76 €	891,89 €	1.020,97 €	1.134,75 €	1.238,05 €	1.341,36 €

Plant box height: **650 mm**. screen wall height: **1.650 mm**

480 mm	627,78 €	744,13 €	857,94 €	964,41 €	1.074,15 €	1.166,18 €	1.258,20 €
--------	----------	----------	----------	----------	------------	------------	------------

## 3. Modular Ventus with clear glass panel (rear) and bench | made of corten steel 1.5 mm

Plant box height: **400 mm**. screen wall height: **1.650 mm** (also in heights of 1.450 mm und 1.850 mm)

Width \ Length	Recommended retail price excl. VAT						
	630 mm	880 mm	1.130 mm	1.380 mm	1.600 mm	1.800 mm	2.000 mm
440 mm	903,49 €	1.139,79 €	1.376,05 €	1.616,54 €	1.820,38 €	2.020,00 €	2.198,43 €

Prices and dimensions may contain errors.



# Modular | Aluminium Plant boxes

## Product description

The plant boxes from the «Modular» series made of aluminum can be easily assembled and screwed together thanks to the individual segments. The screws are inserted through the stabilizing flanges of two segments on the inside and fastened with nuts.



The base plate is also fixed to the plant box using screwed connections.

For larger boxes, tie rods included in the scope of delivery strengthen the product's stability.

Should you wish to add an insulating layer to this plant box, we recommend using 20mm-thick Styrodur sheets that are easy to cut to size and insert. This provides optimal insulation which protects equally against frost and dehydration.



We also produce plastic-coated water basins upon request that protect substrates that are easily soiled.

To save space, the plant boxes are packaged and delivered as individual segments as standard; they can, however, be pre-assembled if preferred.

**Standardcolour**  
pure white RAL 9010



**Standardcolour**  
iron mica DB 703

Besides our standard products listed in the tables on the opposite page, we also manufacture plant boxes with custom dimensions and in any RAL or DB colour. The image below shows a bespoke box made for the "Garten(t)räume" exhibition at the GaLaBau 2018 trade fair. This planting system provides smooth transitions between plant boxes and raised beds.



Corner  
connector



Your experts for  
gardening and  
landscaping

Partner of the "Garten(t)räume"  
exhibition hosted by the German Association  
of Gardening, Landscaping and Recreation  
Construction (BGL) at the 2016 + 2018 GaLaBau  
trade fairs in Nuremberg

## Standard height of the Modular plant box: 400 mm

Aluminium 1.5mm incl. plastic coating	Length		RRP excl. VAT						
	Width	440 mm	630 mm	880 mm	1.130 mm	1.380 mm	1.600 mm	1.600 mm	2.000 mm
	440 mm	194,86 €	263,57 €	296,86 €	330,23 €	355,27 €	392,74 €	425,01 €	446,00 €
	630 mm	263,57 €	335,00 €	372,88 €	410,08 €	438,68 €	479,72 €	509,74 €	539,72 €
	880 mm	296,86 €	372,88 €	414,94 €	457,14 €	491,57 €	537,61 €	570,96 €	605,11 €
	1.130 mm	330,23 €	410,08 €	457,14 €	505,17 €	544,61 €	594,82 €	633,16 €	671,48 €
	1.380 mm	355,27 €	438,68 €	491,57 €	544,61 €	589,03 €	643,42 €	685,93 €	728,40 €

## Standard height of the Modular plant box: 650 mm

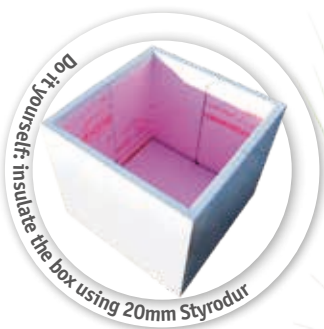
Aluminium 1.5mm incl. plastic coating	Length		RRP excl. VAT						
	Width	440 mm	630 mm	880 mm	1.130 mm	1.380 mm	1.600 mm	1.600 mm	2.000 mm
	440 mm	240,19 €	320,26 €	363,34 €	406,51 €	451,31 €	487,46 €	521,94 €	556,40 €
	630 mm	320,26 €	402,61 €	449,43 €	495,71 €	541,87 €	582,48 €	619,72 €	656,93 €
	880 mm	363,34 €	449,43 €	499,65 €	550,02 €	600,95 €	645,64 €	685,59 €	726,21 €
	1.130 mm	406,51 €	495,71 €	550,02 €	605,14 €	660,15 €	708,24 €	752,28 €	796,31 €
	1.380 mm	451,31 €	541,87 €	600,95 €	660,15 €	719,25 €	770,74 €	818,18 €	865,61 €

Prices and dimensions may contain errors.

### Standard colour combinations

The plant boxes are produced in the colour combination **pure white (RAL 9010)** and **iron mica (DB 703)** as standard.

Additional colours are also available upon request. However a surcharge covering pre-production costs of 94,14 € per colour will apply.



# Adam living wall | A new perspective on seamless greenery

Our Adam living wall can transform almost any wall into a garden reaching for the sky. Our façade-greenery solution is an ideal system for new and existing buildings alike. The modular construction of the living wall always guarantees straightforward assembly for everything from a single house wall to entire building complexes.

This is possible thanks to a range of three different substructures and vertical and stepped plant cassettes. The latter are made from 2mm-thick aluminium and can be connected to the mounting rails of any substructure via their mounting hooks. The façade can still be continuously ventilated as this construction allows plenty of space for air circulation.

## Three different substructures for every wall

### 1 For direct wall-mounting

The first substructure, which consists of three top-hat rails that are screwed

directly to the wall, is suitable for walls that can withstand a structural load of around 140kg per square metre. Your chosen plant cassettes are then hooked directly into them. There is a space of 20mm between the wall and external cassette wall for continuous ventilation of the façade. Once in place, this variant delivers a clean aesthetic and gives the impression of greenery floating on the house wall.

### 2 With mounting system on the foundation

Our second substructure variant is the right choice if the building wall requires additional support due to excessive structural load caused by the wall vegetation. This variant has integrated feet that are placed on a foundation and then screwed tight. While most of the weight rests on the feet, special brackets between the substructure and the wall reliably absorb the tipping load of the planted systems. This variant is suitable for curtain façades up to a maximum height of 6m.



1

Including practical backward bend for attaching irrigation hoses



2

With drain nozzle in the lowest plant-cassette row

### 3 For integration in heat recycling systems

Our third substructure variant is again a free-standing system and builds up to a total height of 240mm. It is designed to accommodate wall-mounted insulation with a thickness of 160mm, which is installed around the wall bracket.

However, in this case the extra bonded permeable layer does not sit next to a panel, as is the case with curtain façades, but rather an appropriate plant cassette. This is hooked directly into the substructure and fully covers the underlying insulation.



3

Plant cassettes for every taste!



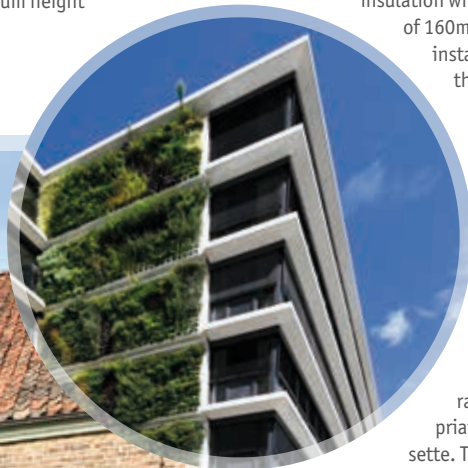
#### Stepped plant cassette

- Fully welded plant-box rows
- Upright planting with a substrate depth of 120mm
- Connection to the substructure via cut-outs



#### Vertical plant cassette

- Fully vertical design
- Plants inserted from the sides
- Cut-outs with a diameter of 84mm



Seamless vegetation for the family home right up to the office façade

# Eva living wall | Bring the smallest of spaces to life

200 plants per wall (at a height of 1.944mm)



Steel Magnelis\* 2.0 mm

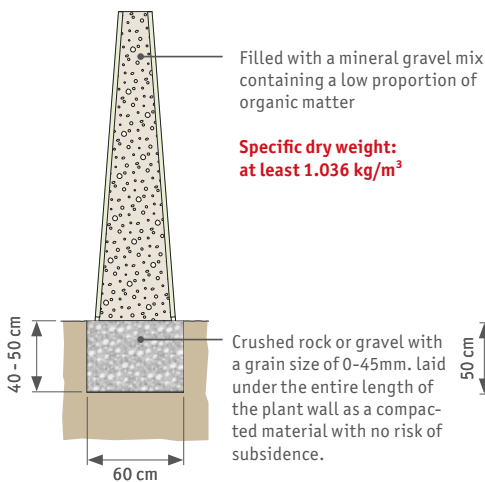
Item designation	Height	Width	Depth below	Depth above	Colour	RRP excl. VAT
EVA O 1176-1450-500 ST	1.176 mm	1.450 mm	500 mm	324 mm	natur / none	866,16 €
EVA W 1176-1450-500 ST	1.176 mm	1.450 mm	500 mm	324 mm	Pure white	962,40 €
EVA G 1176-1450-500 ST	1.176 mm	1.450 mm	500 mm	324 mm	Iron mica	962,40 €
EVA O 1944-1450-500 ST	1.944 mm	1.450 mm	500 mm	209 mm	natur / none	1.295,20 €
EVA W 1944-1450-500 ST	1.944 mm	1.450 mm	500 mm	209 mm	Pure white	1.439,11 €
EVA G 1944-1450-500 ST	1.944 mm	1.450 mm	500 mm	209 mm	Iron mica	1.439,11 €

\*Steel with magnesium-zinc coating (10x greater corrosion resistance than galvanised steel + self-healing protection for cut edges)

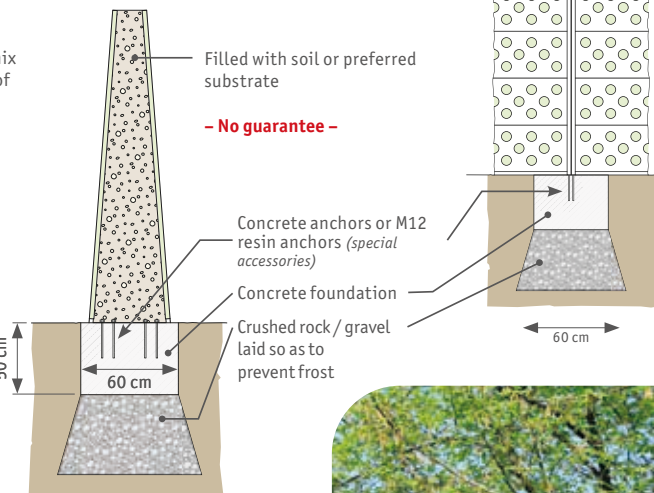
Prices and dimensions may contain errors.



## Set-up option A



## Set-up option B



## Product description

Available in two different heights, the Eva living wall breathes life into the smallest of spaces thanks to its plantable sides. A specially designed tray enables the wall to also be used indoors.

The required base area of 0.73m<sup>2</sup> is able to support around 5.7m<sup>2</sup> of planting space in the taller version: that's almost eight times the size of the wall's footprint - a perfect way to fill tight spaces with greenery.

Moreover, the living wall is easily assembled in minutes using a plug-in system and has plenty of room to accommodate 20 plants per panel. The higher wall can therefore fit 200 and the lower version 120 plants.

Depending on the weight of the filled planting soil, the vertical garden can either be erected as a free-standing unit or installed on top of an additional concrete base and secured with floor anchors.

The sectional drawings above illustrate

the different ways of constructing the wall.

### Protection against frost and dehydration

The panels are insulated using Styrodur sheets to protect the plants from frost and heat. The sheets are easy to drill through when planting the walls.

The circular plant slots are 84mm in diameter and therefore accommodate the standard root ball size of plants from 9cm pots.

The Eva living wall is available in three standard versions: either with a natural finish (*no surface processing*) or with powder coatings in the colours pure white (RAL 9010) or iron mica (DB 703). Additional colours are of course also possible upon request.

Besides adding greenery and thus improving air quality in a room, the Eva living wall also dampens noise and increases privacy.



# Serva | Plant boxes with planting trough

Insulating effect thanks to double-walled structure.

Custom measurements  
Upon request

Polished stainless steel 1/2A

Item designation	Height	Width	Depth	RRP excl. VAT
PK 500-500-500 VA	500 mm	500 mm	500 mm	538,37 €/piece
PK 500-500-1000 VA	500 mm	500 mm	1,000 mm	687,62 €/piece
PK 1000-500-500 VA	1,000 mm	500 mm	500 mm	722,81 €/piece
PK S VA (custom-made)	Custom dimensions			Upon request



h-d-g steel\*

Item designation	Height	Width	Depth	RRP excl. VAT
PK 500-500-500 ST	500 mm	500 mm	500 mm	334,19 €/piece
PK 500-500-1000 ST	500 mm	500 mm	1,000 mm	386,13 €/piece
PK 1000-500-500 ST	1,000 mm	500 mm	500 mm	394,00 €/piece
PK S ST (custom-made)	Custom dimensions			Upon request

\* hot-dip galvanised steel

Prices and dimensions may contain errors.



Prices for RAL coatings available upon request



Planting trough

Protects against frost and dehydration



## Product description

The double-walled structure of the plant boxes with plant trough inserts protects the contents from frost and dehydration as the insulating air spaces shield plants from both heat and cold.

The 200mm-high troughs are produced with retractable handles as standard, allowing them to be conveniently lifted out and planted. They can also be fitted with fixed handles upon request.

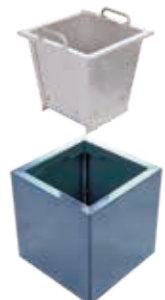
The tapered shape of the trough also facilitates its removal.

Moreover, this design prevents the plant trough from incurring frost damage as any ice forming inside the trough can expand and move upwards.



These clever details benefit and

protect the plants in the long run and make them easier to look after.



We're also happy to produce bespoke solutions upon request in different dimensions or shapes.



# Serva | Plant boxes with panels

Insulating effect thanks to double-walled structure.



Polished stainless steel <sup>1/2A</sup>

Item designation	Height	Width	Depth	RRP excl. VAT
PK P 500-500-500 VA	500 mm	500 mm	500 mm	585,39 €/piece
PK P 500-500-1000 VA	500 mm	500 mm	1,000 mm	768,91 €/piece
PK P 1000-500-500 VA	1,000 mm	500 mm	500 mm	807,15 €/piece
PK P S VA (custom-made)	Custom dimensions			Upon request

h-d-g steel\*

Item designation	Height	Width	Depth	RRP excl. VAT
PK P 500-500-500 ST	500 mm	500 mm	500 mm	429,62 €/piece
PK P 500-500-1000 ST	500 mm	500 mm	1,000 mm	535,75 €/piece
PK P 1000-500-500 ST	1,000 mm	500 mm	500 mm	546,84 €/piece
PK P S ST (custom-made)	Custom dimensions			Upon request

\* hot-dip galvanised steel

Prices and dimensions may contain errors.



Prices for RAL coatings available upon request

Protects against frost and dehydration

Panels

## Product description

The double-walled construction of the plant boxes with panels fitted to the inside protects the plants from frost and dehydration. This protection is aided through the insulating air spaces, which form a gap between the soil and the outer shell.

The image above showing two open side walls clearly illustrates the well-designed system.

This version can be completely filled with soil and is particularly well suited to larger tub plants with pronounced root balls and thus a greater need for space.

The clever details incorporated into this plant box benefit and protect the plants in the long

run and make them easier to look after.

We're also happy to produce bespoke solutions upon request in different dimensions or shapes.

ALL RAL colours possible





# Richard Brink GmbH & Co. KG

## Metalware Production and Sales

### Germany

Görlitzer Straße 1  
33758 Schloß Holte-Stukenbrock  
T +49 (0)5207 95 04-0  
F +49 (0)5207 95 04-20

[anfragen@richard-brink.de](mailto:anfragen@richard-brink.de)  
[bestellungen@richard-brink.de](mailto:bestellungen@richard-brink.de)

### Great Britain

Causeway House  
13 The Causeway  
Teddington, TW11 0JR  
T +44 (0) 20 3096 7261

[request@richard-brink.de](mailto:request@richard-brink.de)

[www.richard-brink.com](http://www.richard-brink.com)



Your experts for gardening  
and landscaping  
Partner of the North  
Rhine-Westphalia  
Association of Gardening,  
Landscaping and  
Recreation Construction

# Spring brochure Planting systems **2024**

Upon request:

**Aluminium, steel, corten steel  
and stainless steel strip edgings**

With integrated concrete anchors and a material  
thickness of up to 10mm

Strip edging including round hole anchors

Strip edging with integrated  
trapezium anchors

